

FREE PUBLICATION

Wright County

2019-2020
Activity and
Attractions Guide



SECURITY
Savings Bank
The wRight Bank!

Eagle Grove 515.448.5111	Goldfield 515.825.3151	Clarion 515.532.6635
-----------------------------	---------------------------	-------------------------

www.ssbankia.com 

EVENTS

**For every age
And every season**

**Clarion Chamber members give
generously to the community
by supporting events & celebrations.
Come join the fun!**

Apr 15-20: Clarion Lottery Week

Apr 18 - Ladies Night Out

Jun 7 & 8 – Festival in the Park

Jul 19 & 20 – Clarion's Ridiculous Dayz

Aug 16 – Clarion Chamber's Annual Golf Outing

Aug 29-30 – Highway 3 Garage Sales

Sept 11 – A Meal on Main

Oct 18 & 19, 25 & 26 - Spooktacular Nights Haunted House

Oct 26 - Trick or Treat the Businesses

Nov 7-9 – A Kick off to the Holidays

Nov 7 – Ladies Night Out

Nov 30 – Small Business Saturday

Dec 4 – Light the Gazebo Night

Dec 7 - Jingle Jam

Dec 14 – Breakfast with Santa & Candy Cane Run

Dec 19 – Late night, last minute Christmas shopping

Dec 15 – Extra day, last minute Christmas shopping

Feb 11 - Valentine's Day Dinner Theatre

Mar 6 – Masquerade Ball

**For more info, contact the Clarion
Chamber. Open weekdays, 9am-1pm.**

**Clarion Chamber
302 S Main St, PO Box 6
515-532-2256
chamber@clarioniowa.com
www.clarioniowa.com**

This ad was funded by the Clarion Hotel/Motel Tax Grant.



visit...play...stay

Wright County

Dear Wright County residents and visitors,

Once again, it gives us great pleasure to welcome you to our Wright County 2019-2020 Activity and Attractions Guide. Whether you are a lifelong resident of our county or are just spending a few hours or days, we hope that you enjoy your time here.

We invite you to look through the pages to find things to do and places to visit. Enjoy participating in many events and attractions coming up in the next year. Don't hesitate to treat this guide like as a 'telephone book' to be referred when looking for something to enjoy, a place to visit or stay.

Along with enjoying Lake Cornelia area, or dozens of other recreation areas across the county, the 'Wellness Works in Wright County' group wants all of us to take a second look at 'being and staying well'. Throughout the guide look for:



In the Schedule of Events listing, see: [WWW](#)

The smaller colored scrolls remind readers to have fun at a particular event, while getting and staying healthy.

Find camping opportunities, golf courses, places to swim, dine, or enjoy other forms of recreation. Take a second look, even if you have lived in Wright County your entire life. You might find some interesting facts, information, or places to enjoy, of which you have been previously aware.

For questions or comments, feel free to contact me. If you need additional visitor information or have helpful comments for an improved guide in the future, again contact me.

Karen Weld,
Publication Chairperson
jweld@wmtel.net
(515) 532-2916

TABLE OF CONTENTS

Calendar	4-14	Lodging	28
Gas & Convenience		Camping	29
Stores.....	16	Parks.....	30-31
Recreation	17-19	Meeting Places	32-35
Golf	20	City Directory	37
Attractions	21-24	Emergency	38
Banks/ATMs	26	Restaurants	39
Entertainment	27	Churches	40-41

calendar



April 2019-March 2020

ONGOING EVENTS

Summer BIKE NIGHTS – Every Thursday evening, FUEL, 223 N Main St., Clarion. Runs mid-May through the end of August, call (515) 532-3835.

Iowa Specialty Hospital Auxiliary's community Blood Drives in Clarion – First Tuesday of every month from 1-6 p.m. at United Presbyterian Church. Schedule appointments online at www.lifesevblebloodcenter.org or call (800) 287-4903.

Dows Public Library story times – October-March; first and third Wednesday morning from 9:15-10 a.m. Call (515) 852-4326.

APRIL 2019

Monday, April 1 – Golf in Wright County. Weather permitting. All five golf courses in Wright County open for the season. Located in/near Belmond, Clarion, Dows, Goldfield and Eagle Grove. www.wrightcountyga.org

Monday, April 1 – Movie Night at Clarion Public Library "Rise of the Guardians," 5:30 p.m. Contact the library at (515) 532-3573.

Tuesdays in April – Spring Storytime from 10-10:45 a.m. at Belmond Public Library, (641) 444-4160.

Thursday, April 4 – C-G-D Middle School Bridging the Gap (between seniors, grandparents, retirees and middle school Peer Helper students) at Clarion-Goldfield- Dows Middle School, 5-8 p.m. Contact Margaret Askelsen, (515) 532-2412.

Friday, April 5 – Annual Dows Stag at Dows Community Center. Contact City Hall, (515) 852-4327.

Friday-Sunday, April 5-7 – Iowa River Players presents "Panache", a romantic comedy. Community Theatre, 901 Broadway, Rowan. 7:30 p.m. curtain with Sunday matinee, 2 p.m. Contact LuAnn Krabbe, (319) 231-7828.

Wednesday, April 10 – "Moon Landing Memories" – commemorating 50th anniversary of the moon landing 10-11 a.m. at Belmond Public Library, (641) 444-4160.

Friday, April 12 – Clarion VFW Annual Fish Fry, 5-7 p.m. VFW Hall, Dennis Mraz, (515) 532-3330.

Friday-Sunday, April 12-14 – Iowa River Players presents "Panache", a romantic comedy. Community Theatre, 901 Broadway, Rowan. 7:30 p.m. curtain on Friday and Sunday evenings with Saturday matinee, 2 p.m. (note varied time schedule). Contact LuAnn Krabbe, (319) 231-7828.

Saturday, April 13 – C-G-D Junior and Senior Prom. High school, contact (515) 532-2895.

Saturday, April 13 – Live Healthy Iowa 5K walk/run, hosted in 19 communities across the state. Learn locations/register until April 8, (888) 777-8881, www.livehealthyiowa5k.org. www.wrightcountyga.org

Sunday, April 14 – Knights of Columbus Omelet Breakfast, 9 a.m.-12:30 p.m. at St. Francis Catholic Church.

Monday, April 15 – 'Bunny Bash' at Clarion Public Library, 5-6 p.m. Contact library, (515) 532-3573.

Monday-Saturday, April 15-20 – Clarion Lottery. Shop local and receive entries into the Clarion Lottery which will award "huge" prizes! Sponsored by the Clarion Chamber & Development. (515) 532-2256, www.clarioniowa.com.

Tuesday, April 16 – Iowa Specialty Hospital Auxiliary's Semi-Annual Meeting at Meadows Dining Room, 5:30 p.m.; Jordan Marker, (515) 532-9328.

Wednesday, April 17 – Adult Coloring and Coffee, 10-11 a.m. at Belmond Public Library (641) 444-4160.

Sometime in April (tbd) – Heartland Museum's Volunteer Appreciation, (515)

602-6000.

Thursday, April 18 – Adult Painting Class, 6-8 p.m., reservations required. Belmond Public Library, (641) 444-4160.

Thursday, April 18 – Ladies Night Out in Clarion. 4:30-7:30 p.m. at Retail Businesses. Great night of shopping and socializing. Double entries into the Clarion Lottery on this night. Sponsored by the Clarion Chamber and Development. (515) 532-2256, www.clarioniowa.com.

Saturday, April 20 – Clarion's Annual Easter Egg Hunt at Aquatic Park 10 a.m. Contact City Hall, (515) 532-2847.

Saturday, April 20 – Clarion Health and Fitness/C-G-D School's 19th Annual Fun Walk/Run at Lake Cornelia; starts at 10:30 a.m.; discount for pre-registration. Registration day of the race begins at 9:30 a.m. (515) 532-3500. www.wrightcountyga.org

Saturday, April 20 – Easter Egg Hunt at Dows Community School playground. Sponsored by Dows Commercial Club

Saturday, April 20 – Easter Egg Hunt at Greenwood Park, Eagle Grove. For ages 10 and under

Saturday, April 20 – Goldfield Easter Egg Hunt, 9 a.m. at Old School Park, sponsored by Goldfield Women's Club

Saturday, April 20 – Belmond's Easter Egg Hunt at Belmond City Park, 9 a.m. Sponsored by Belmond Sororities. Contact Belmond Area Chamber of Commerce, (641) 444-3937.

Saturday, April 20 – Eagle Grove Junior and Senior Prom at Robert Blue Middle School, (515) 448-5143.

Sunday, April 21 – Easter Services, churches across Wright County.

Tuesday, April 23 – Ladies' Night Out in Eagle Grove. A night of dining and fun, sponsored by Ambassadors of Eagle Grove. Working Woman of the Year Award given to woman nominated by her peers. Contact the Chamber (515) 448-4821, or visit our website www.eaglegrove.com.

Wednesday, April 24 – Adult Coloring and Coffee, 10-11 a.m. at Belmond Public Library (641) 444-4160.

Tuesday, April 30 – Canine Nutrition Program at Wright County ISU Extension, 6-7 p.m., (515) 532-3453.

MAY 2019

Wednesday, May 1 – Spring Salad Luncheon at First Lutheran Church in Clarion, 11 a.m.-12:30 p.m. Contact Joyce Charlson, (641) 444-4497.

Wednesday-Saturday, May 1-4 – Eagle Grove City-wide Clean Up Days. City Hall, (515) 448-4343.

Wednesday, May 1-Friday, May 31 – Go the Distance, a FREE one day event to get kids active. Create your own 30 minute event; register for chance to win prizes. www.livehealthyiowakids.org. [WWW](#)

Thursday, May 2 – National Day of Prayer.

Friday-Saturday, May 3-4 – Eagle Grove City-wide Garage Sales. Sponsored by the Eagle Grove Eagle (515) 448-4821.

Saturday, May 4 – Thanks with Franks and City-wide Garage Sales. Sponsored by Belmond Area Chamber of Commerce (641) 444-3937.

Saturdays in May – Dramapalooza workshops. Iowa River Players, 901 Broadway, Rowan (performance @ Rowan Fun Day – Saturday, June 1). Register on line at www.iowariverplayersrtheater.org. Contact Lu Ann Krabbe, (319) 231-7828.

Sunday, May 5 – Dance with Me Recital, 2:30 p.m. at Belmond-Klemme High School.

Monday, May 6 – Movie Night at Clarion Public Library (movie to be announced), 5:30 p.m. Contact the library, (515) 532-3573.

Friday-Saturday, May 10-11 – Clarion's Annual Garage Sales. Sponsored by Wright County Monitor, (515) 532-2871.

Saturday, May 11 – Dog Park Fundraiser, Belmond Walking Trail.

Saturday, May 11 – Face Painting School, sponsored by Iowa River Players at theater make-up room, 12:30-2:30 p.m. Register online at www.iowariverplayersrtheater.org. Contact Lu Ann Krabbe, (319) 231-7828.

Wednesday, May 15 – C-G-D High School Baccalaureate and Awards Night, C-G-D High School gym, 7 p.m. High School Office, (515) 532-2895.

Wednesday, May 15 – Eagle Grove

Baccalaureate and Senior Night, Robert Blue Middle School Auditorium, (515) 448-5143.

Wednesday, May 15 – Belmond-Klemme High School Baccalaureate at B-K High School, (641) 444-4300.

Thursday, May 16 – C-G-D Middle School Job Shadow Day. Margaret Askelsen, (515) 532-2412,

Sunday, May 19 – C-G-D High School Graduation, C-G-D High School gym, 2 p.m. High School Office, (515) 532-2895.

Sunday, May 19 – Eagle Grove High School Graduation, Eagle Grove Elementary School Gym.

Sunday, May 19 – Belmond-Klemme High School Graduation, Belmond-Klemme High School, (641) 444-4300.

Some time in May (tbd) – Heartland Museum's Opening Event, (515) 602-6000.

Beginning Tuesday, May 21 – Mastering Conservationist Series, ISU Extension and Outreach. Other dates: May 28; June 4, 11, 18 and 25; July 2. Sarah Zwiefel, (515) 532-3453

Thursday, May 23 – Space Themed Trivia Night, 6:30-8 p.m. at Belmond Public Library, (641) 444-4160.

Saturday, May 25 and Monday, May 27 – Heartland Museum opens for the season in Clarion. Museum is open daily 10 a.m. – 3 p.m. from Memorial Day weekend until Labor Day. The museum is open for groups any time by appointment. Call the Museum, (515) 602-6000 to arrange a time for a tour.

Sunday, May 26-June 30 – Robin Hamer, metal sculpturer, exhibit, Jenison-Meachem Memorial Arts Center. Open every Sunday from 1:30-4:30 p.m. or by appointment. Reception with the artist on Sunday, June 2. Contact (515) 571-3595.

Monday, May 27 – Memorial Day American Legion Pancake Breakfast, C-G-D High School from 7-9:30 a.m.

Monday, May 27 – Memorial Day Services. C-G-D High School gym, 10 a.m., Dean Kluss, (515) 835-0502.

Monday, May 27 – Memorial Day Services at Goldfield Cemetery by Goldfield American Legion, 10 a.m.

Monday, May 27 – Memorial Day Services at Fairview Cemetery in Dows, 10:30 a.m., Popejoy at 9 a.m. Bill Chambers, (515) 689-3961.

Monday, May 27 – Rowan Memorial Day Services, Lions Club Pancake and Egg Breakfast, 7-9 a.m. at Rowan Events Center. Legion Memorial Day Services, 10 a.m. at Graceland Cemetery. Lee Aldrich, (515) 571-3286.

Monday, May 27 – Rowan School Reunion, in conjunction with Memorial Day services, lunch at 11 a.m.; meeting at 1 p.m. (historical museum open during the day, held every 3 years). - Bonnie Leist, (641) 853-2482.

Monday, May 27 – Memorial Day Services at Eagle Grove Rose Hill Cemetery.

DIVE INTO SUMMER FUN! [Wright County aquatic centers and swimming pools opening on/near Memorial Day weekend, weather permitting and when school is out for the year. Closing for the season on/near Labor Day.](#) [WWW](#)

See page 29 for pool and aquatic center contact information. Check city halls for complete details on hours, fees, schedules, availability for private parties.

Friday, May 31 – “Collective Goods” fundraiser (formerly Books are Fun). Iowa Specialty Hospital Auxiliary Fundraiser, Clarion location board rooms, 10 a.m.-4 p.m. Jordan Marker (515) 532-9328.

JUNE 2019

Saturdays, June 1-October 5 – Clarion Farmer's Markets, Wright County Courthouse Square from 9-11 a.m. Billy Zeiger Katschke, (515) 851-0567.

Saturday, June 1 – Garage sales around Lake Cornelia; Lake Cornelia Association, Lavon Marshall, (515) 851-0790.

Saturday, June 1 – Rowan ‘FUN DAY,’ Sponsored by Rowan Improvement Foundation. Lots of fun events, walk/run, activities, food, beginning with an early morning breakfast, Rowan Events Center; contact Lennea Groom, (515) 293-1657. [WWW](#)

JULY 2019

Saturday, June 1 – Dramapalooza Performance, Iowa River Players, 901 Broadway, Rowan. IRP will host a face painting booth at the Rowan Fun Day. Contact LuAnn Krabbe, (319) 231-7828.

Saturday, June 1 – Annual Kite Flying Day at Jenison-Meachem Memorial Arts Center. Contact (515) 571-3595.

Saturday, June 1 – Belmond Summer Market at City Park, 9-11 a.m. (641) 444-3937.

Wednesday, June 5 – Salad Luncheon at St. John's Catholic Church in Clarion from 11 a.m. to 1 p.m. Includes farmers' market and bake sale. Monica Staudt, (515) 825-3809.

Wednesdays, June 5-August 14 – Clarion Farmer's Markets, Wright County Courthouse Square from 4-6 p.m. Billy Zeiger Katschke, (515) 851-0567. [WWW](http://www.wrightcountyfarmersmarket.com)

Wednesday, June 5-Sunday, June 9 – Iowa Senior Games for men and women 50 and above in West Des Moines. Register at iowaseniorgames.org.

Monday-Friday, some week the beginning of June (depending on school rescheduling from snow dates) – Vacation Bible School at United Presbyterian Church, Goldfield. 9-11:30 a.m. each day. Classes for three-year-olds through fifth grade. Diane Kraft, (515) 825-3581.

Friday-Sunday, June 7-9 – **FREE FISHING** in Iowa. Each year the state of Iowa allows one weekend of free fishing early in the season. No fishing licenses required for any Iowa resident. Enjoy fishing at its finest, at one of Wright County's lakes or rivers. For more information, Wright County Conservation office – (515) 532-3185. [WWW](http://www.wrightcountyconservation.com)

Friday-Saturday, June 7-8 – Festival in the Park, Clarion's annual celebration. Join in the fun! Friday is Family Fun Night, 5-8 p.m. at Downtown/Courthouse Lawn. Featuring kids' games, a magician, balloon animals, face painting, juggling, trikes, and more! The 5K walk/run is also Friday night. Saturday begins with the firemen's breakfast, parade, craft vendor show, and food vendors with musical entertainment in the park from 11 a.m.-3 p.m. Sponsored by the Clarion Chamber and Development. (515) 532-2256, www.clarioniowa.com. [WWW](http://www.clarioniowa.com)

June, Festival in the Park Weekend – Car/Truck show at Clarion's Heartland Museum. Enthusiasts are encouraged to plan to bring their vehicle to show! (515) 602-6000 for more information.

June and July – Summer Reading Programs at Wright County Public Libraries. This year's theme is "A Universe of Stories." Contact Belmond, (641) 444-4160; Clarion, (515) 532-3673; Dows, (515) 852-4326; Eagle Grove, (515) 448-4115; or Rowan, (641) 853-2327 for details, dates, and times. Look for other events/activities throughout the year.

Wednesday, June 12 – Tim Read: Super Galactic Space Journey 3-4 p.m. at Belmond Public Library, (641) 444-4160.

Thursday, June 13 – Clarion Public Library's first summer reading program – "Science Center Fun" at 9 a.m. Contact library (515) 532-3573.

June (tbd) – Eagle Grove Annual Chamber Golf Outing. Prizes, make plans to attend. For more information, contact Eagle Grove Chamber, (515) 448-4821. www.eaglegrove.com. [WWW](http://www.eaglegrove.com)

Saturday, June 15 – Eagle Grove's Annual SUMMERFEST. It's Eagle Grove's annual community celebration. Inflatables, mud volleyball, street dance with "Standing Hampton" and lots more to enjoy. Sponsored by the Eagle Grove Chamber of Commerce, (515) 448-4821 or www.eaglegrove.com. [WWW](http://www.eaglegrove.com)

Tuesday, June 18 – Iowa Specialty Hospital Auxiliary's Scrubs and Uniform Sale, 7 a.m.-2 p.m. ISH Clarion Board Room. Contact Jordan Marker, (515) 532-9328.

Sunday, June 23-Sunday, August 11 – Lake Cornelia Services (8 weeks). Open Air Shelter, 8 a.m. Clarion Church of Christ, (515) 532-3273.

Tuesday, June 25 – Clarion Public Library's summer reading program "Sky Lab" with Jake Schaben, 2-3 p.m. Contact the library, (515) 532-3573.

Wednesday, June 26 – "Supper's On!" at United Presbyterian Church, Goldfield, 6-7 p.m. Free community meal, menu to be determined. Diane Kraft, (515) 825-3581.

Wednesday, July 3 – "Blank Park Zoo" summer reading program (plus crafts and games) at Dows Public Library, 10 a.m.-noon, (515) 852-4326.

Wednesday, July 3 – Salad Luncheon with Belmond 4th of July events at VFW Hall, sponsored by St. Olaf Lutheran Church. For more information call Cindy Pogge at (515) 571-2827 or (641) 762-3306.

Wednesday, July 3 – Iowa Specialty Hospital's Kiddie Parade and Carnival. (641) 444-3937.

Thursday, July 4 – Belmond's Annual Fourth of July celebration with parade, lots of activities and events including kickball; basketball tourney; walk/run; free swimming at the Belmond pool; fireworks in the evening - Sponsored by Belmond Area Chamber of Commerce, (641) 444-3937. [WWW](http://www.belmondchamber.com)

Saturday, July 6 – Independence Day Activities at Lake Cornelia. Pancake breakfast, games and contests in the afternoon, boat parade and fireworks in the evening. Always a crowd favorite of the summer! Lake Cornelia Association, Lavon Marshall, (515) 851-0790.

Saturday, July 6 – Belmond Summer Market at City Park, 9-11 a.m. (641) 444-3937.

Saturday, July 6 – Bill Riley Talent Show at Belmond-Klemme High School, 2 p.m. Contact Linda at (641) 444-7193 after June 1.



Sunday, July 7 – “Project Aware.” Boone River clean up begins for the week at Goldfield’s River Park, ends July 12. For more information, call Greg Soenen at (515) 603-9011.

Sunday, July 7-August 4 – Dave Swenson, photographer, exhibit at Jenison-Meachem Memorial Arts Center. Open every Sunday from 1:30-4:30 p.m. or by appointment. Reception with the artist on Sunday, July 7. Contact (515) 571-3595.

Wednesday, July 10 – “(program to be determined)” summer reading program (plus crafts and games) at Dows Public Library, 10 a.m.-noon. (515) 852-4326.

Wednesday, July 10 – Wright County Fair Parade. Over 100 entries the past five years! This year’s theme: Fair Necessities at the Wright County Fair; proceed through downtown Eagle Grove ending at the fair grounds, begins at 6:00 PM. Sponsored by Eagle Grove Chamber of Commerce, (515) 448-4821.

Wednesday, July 10-Monday, July 15 – **Wright County District Junior Fair.** Long standing tradition of being one of the best FREE gate, FREE parking fairs in the state. A countywide event exhibiting projects of Wright County as well as several adjoining counties youth and adults. With unbelievable 4-H and FFA livestock shows, a full schedule of free stage acts including a program to honor Veterans on our BRAND NEW FREE STAGE, commercial booth vendors, NEW Kids Zone, plus a wide variety of ever popular food vendors. For a small price, watch grandstand events: Fantasy Truck Pullers, Omaha Street Percussion opens for Phil Vandel Band and Wright Rodeo with fireworks on the final night. The Wright County Fair is a great opportunity to ‘Build It, Sew It, Grow It, and Show It’ - you don’t miss it! Contact Tricia Rosendahl, manager, (515) 448-3351, www.wrightcofair.com for a complete listing of events.

Some date during the July Wright County District Junior Fair – 3rd Annual National 4-H Week 5K – fairgrounds. All proceeds go to the Wright County 4-H Program. (515) 532-3453. www.wrightcofair.com

Tuesday, July 16 – Clarion Public Library summer reading program, “Astronaut Adventures,” 10:30-11:30 a.m. Contact the library, (515) 532-3573.

Wednesday, July 17 – “Jester Puppets” summer reading program (plus crafts and games) at Dows Public Library, 10 a.m.-noon. (515) 852-4326.

Wednesday, July 17 – Grout Museum: Super Cold, 3-4 p.m. at Belmond Public Library. (641) 444-4160.

Friday, July 19 – Belmond Chamber of Commerce Golf Outing. Sponsored by Belmond Area Chamber of Commerce, (641) 444-3937.

Friday-Saturday, July 19-20 – Clarion’s Ridiculous Dayz. Bargains, food, and lots of fun! Sponsored by the Clarion Chamber and Development. (515) 532-2256, www.clarioniowa.com.

Friday, July 19 – First Citizens Bank Customer Appreciation Lunch on the Wright County Courthouse Square. (515) 532-2841.

Friday-Sunday, July 19-21 – Iowa River Players presents “Treasure Island”, a classic tale of adventure with a ‘twist’ of music/dance/comedy. Community Theatre, 901 Broadway, Rowan. 7:30 p.m. curtain with Sunday matinee, 2 p.m. Contact LuAnn Krabbe, (319) 231-7828.

Saturday, July 20 – Conquer The Gauntlet™, the most EXTREME four miles on the planet. Race through grueling terrain and CONQUER over 25 of the largest, most unique, and challenging obstacles on earth! Do you have what it takes to Conquer the Gauntlet? More information go to conquerthegauntlet.com/locations/iowa/ www.wrightcofair.com

Sunday-Thursday, July 21-26 – Clarion’s Ecumenical Vacation Bible School, Nikki Conlon, (515) 532-2845

End of July – Iowa Games, most held in Ames with various dates and locations. Opening event on the evening of Friday, July 19 at Jack Trice Stadium, (888) 777-8881, livehealthyiowa.org. www.wrightcofair.com

Wednesday, July 24 – “Pool Party” – summer reading program with Dows Public Library, (515) 852-4326. www.wrightcofair.com

Friday-Sunday, July 26-28 – Goldfield’s Fountain City Days. A day of food,

fun, and festivities in Goldfield. Megan Fiscus, (515) 298-0838.

Friday-Sunday, July 26-28 – Iowa River Players presents “Treasure Island”, a classic tale of adventure with a ‘twist’ of music/dance/comedy. Community Theatre, 901 Broadway, Rowan. 7:30 p.m. curtain with Sunday matinee, 2 p.m. Contact LuAnn Krabbe, (319) 231-7828.

Saturday, July 27 – Progressive Supper at Lake Cornelia. Sponsored by Lake Cornelia Association, Lavon Marshall, (515) 851-0790.

Tuesday, July 30 – Clarion Public Library summer reading program with the Hanson Family, 5 p.m. Contact library (515) 532-3573.

Some date in July (tbd) – Clarion Public Library ends its summer reading program with a pizza party. Contact library for details, (515) 532-3573.

AUGUST 2019

Friday-Sunday, August 2-4 – **Dows CORN DAYS.** Annual tradition of this three-day celebration continues. Many of the events center at the downtown city park with entertainment, food, exhibits and rides for the kids. Enjoy the 5K fun walk/run, parade and the Dows Historical buildings. Days kick off with a Texas Jam on Friday night in the gazebo. Visit the Dows Mercantile, Welcome Center, rural schoolhouse and Quasdorf Blacksmith Museum. Sunday ecumenical church service, Bev Lange, (515) 852-4623 or City Hall, (515) 852-4327. www.wrightcofair.com

Saturday, August 3 – Belmond Summer Market at City Park, 9-11 a.m. (641) 444-3937.

Wednesday, August 14 – Final Wednesday Clarion Farmer’s Market. Wright County Courthouse Square from 4-6 p.m.

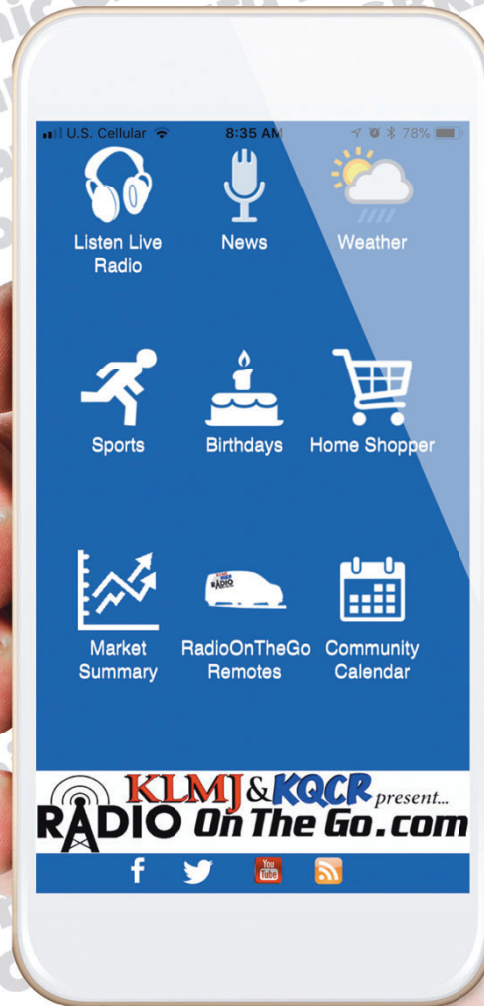
Friday, August 16 – Clarion Chamber’s Annual Golf Outing. Join us for the our 3rd annual event. Golfers will enjoy a fun-filled day of competition, socializing, food, awards and prizes. This year it will be an 18-hole tournament. Sponsored by the Clarion Chamber and Development. (515) 532-2256, www.clarioniowa.com. www.wrightcofair.com

Some Saturday in August (tbd) – Belmond Dog Days Triathlon. Three-mile

When it is happening, we will be there!

Your stations on the go are

KLMJ & KQCR
RADIO On The Go



We've got you
covered when
you're on the go!
Follow Us on:



KLMJ
FM 104.9
HAMPTON

KQCR
98.9
Parkersburg FM

run, 10-mile bike and 160-meter swim. Shorter distances available for school aged kids. Starts at Luick Pool, 908 1st St. SE. Contact Leigh Faaborg, (515) 571-1316. [WWW](#)

Friday-Sunday, August 16-18 – 30th Annual Prairie Homestead Antique Power and Craft Show. Jenison-Meachem Memorial Art Center, two miles north, one mile east of Belmond. Features Minneapolis Moline Tractors and Equipment; all makes and models of garden tractors, Iowa State Plowing Contest (Friday and Saturday), Stock Antique Tractor Pull (Sunday) and Iowa State Fair Championship Pull (Sunday). Musical entertainment by Jessi Allen (Friday), Mockingbirds (Saturday) and Brad Revland and Friends (Sunday). Cowboy Church at 8:30 a.m. on Sunday. Sponsored by Belmond Area Arts Council. Contact Dave Nelson, (515) 571-6838 or (641) 444-4635; www.belmondartscenter.org

August (tbd) – Red Apple Luncheon at Memorial Hall in Eagle Grove at noon; sponsored by Eagle Grove Ambassadors. Meet and greet new teachers and welcome returning teachers to Eagle Grove. Contact Chamber of Commerce, (515) 448-4821.

Sometime in August (tbd) – Heartland Museum's Quilt Show. (515) 602-6000.

Saturday, August 24 – Annual Shrimp Fest. Dows Convention Center. Shannon Muhlenbruch, (515) 852-4156.

Sometime in August (tbd) – “Have Lunch With Us” at Security Savings Bank. Clarion and Eagle Grove locations, (515) 448-5111.

Sunday, August 25-September 29 – Linda Flarherty, still life and oil image artist, exhibit at Jenison-Meachem Memorial Arts Center. Open every Sunday from 1:30-4:30 p.m. or by appointment. Reception with the artist on Sunday, August 25. Contact (515) 571-3595.

Thursday-Saturday, August 29-31 – Highway 3 Corridor Yard Sales; Wright, Franklin and Butler Counties. Find garage and yard sales across Wright, Franklin and Butler Counties. Contact: Wright County, (515) 532-2256; Franklin County, (641) 456-5668 or Butler County, (319) 267-2858.

Thursday-Saturday, August 29-31 – United Church of Rowan Highway 3 Corridor Yard Sales, includes bake sale and lunch counter. 8 a.m.-6 p.m. Thursday and Friday, 8 a.m.-2 p.m. Saturday. Lennea Groom, (515) 293-1657.

Saturday, August 31-Monday, September 2 (Labor Day Weekend) – Heartland Museum changes from its summer hours after Labor Day. Remains open on Sat-

urdays through the month of September. Museum is always open for tours at other times by appointment (515) 602-6000.

SEPTEMBER 2019

Wednesday, September 4 – Fall Salad Luncheon, serving from 11 a.m.-12:30 p.m. First Lutheran Church, Clarion, Joyce Charlson, (641)-444-4497.

Sunday, September 15 – Swiss Steak Dinner and Raffle at St. John Catholic Church in Clarion, 11 a.m.-1 p.m. Carryouts available, also home deliveries. Contact Chris Leichsenring, (515) 293-1312.

Wednesday, September 11 – “A Meal on Main.” Join in the fun for the 2nd event, featuring local food, art, and music! Reserve a seat at the table, right down Clarion's Main Street! Supported by the Clarion Chamber and Development, (515) 532-2256. www.clarioniowa.com

Sometime in September (tbd) – Clarion Public Library's 10th Anniversary of our library's Expansion/Renovation celebration. (515) 532-3573

Monday, September 16 – Time to join 4-H youth and adult volunteers. Enroll on line or at the county extension office. Wright County Extension Office, youth director, (515) 532-3453.

Some Saturday this fall (tbd) – St. Olaf Lutheran Church, lunch, vendor fair, crafts and bake sale. Begins at 9 a.m. For more information call Cindy Pogge at (515) 571-2827 or (641) 762-3306.

Sunday, September 22 – Rowan Lions Club Annual Chicken BBQ at Rowan Event Center. Serving starts at 11 a.m. (641) 853-2365.

Wednesday, September 25 – See You At The Pole. Student-led prayers at school flag poles across the nation.

Wednesday, September 25 – Fall Salad Luncheon at St. John's Catholic Church, Clarion. 11 a.m.-1 p.m., includes farmers' market and bake sale. Monica Staudt, (515) 825-3809.

Wednesday, September 25 – “Supper's On!” at United Presbyterian Church, Goldfield. 6-7 p.m. Free community meal, menu to be determined. Diane Kraft, (515) 825-3581.



ROWAN LIONS CLUB BBQ

OCTOBER 2019

Tuesdays in October – Fall Storytime from 10-10:45 a.m. at Belmond Public Library, (641) 444-4160.

Wednesday, October 2 – Fall Fitness Day. “Walk More; Connect More,” part of annual Healthiest State Walk for schools and youth organizations. Kids get active for 30 minutes, FREE event. Register between August 1 and October 3 www.iowahealthieststate.org. [WWW](#)

Saturday, October 5 – Final Clarion Farmer’s Market for the season in Wright County Courthouse Square from 9-11 a.m.

Saturday, October 5 – Fall Festival and Family Fun Fest. Sponsored by Belmond Area Chamber of Commerce, (641) 444-3937.

October 6-12 – National 4-H Week. Wright County Extension Office, youth director, (515) 532-3453.

Tuesday, October 15 – Iowa Specialty Hospital Auxiliary’s Semi-Annual Meeting at Meadows Dining Room. 5:30 p.m. Jordan Marker, (515) 532-9328.

Sometime in October (tbd) – Heartland Museum’s Indoor Cemetery Walk. (515) 602-6000.

October 18-19, 25-26 – Spooktacular Nights Haunted House. The fourth year of our Haunted House and Halloween festivities for those who enjoy a good scare! Sponsored by the Clarion Chamber and Development. 515-5832-2256, www.clarioniowa.com

Some time in October (tbd) – 3rd Annual Fall Festival at Lake Cornelia. Hayrack rides, pumpkin carving, scarecrow building, kayaking. Lots of family fun. Contact Wright County Conservation, (515) 532-3185. [WWW](#)

Some Friday in October (last home CGD home football game) – Clarion VFW annual chili supper. Dennis Mraz (515) 532-3330.

Some day in October (tbd) – Halloween Walk in Eagle Grove; contact Eagle Grove Chamber for more information, (515) 448-4821 or visit www.eaglegrove.com. [WWW](#)

Some date in October – Halloween and Trick and Treat Party at Clarion Public Library, (515) 532-3673.

Friday, October 25 – “Collective Goods” fundraiser (formerly Books are Fun) a Iowa Specialty Hospital Auxiliary Fundraiser. Clarion location board rooms, 10 a.m.-4 p.m., Jordan Marker, (515) 532-9328.

Some day in October (tbd) – Trunk or Treat in United Presbyterian Church, Goldfield, parking lot, then at 7 move inside for Halloween treats and fun activities.

Saturday, October 26 – Downtown Trick or Treat in Clarion, 9:30-11 a.m. Free cartoons at the theatre at 11 a.m. Sponsored by the Clarion Chamber and Development. 515-532-2256. www.clarioniowa.com

Thursday, October 31 – Halloween is celebrated! Annual Trick and Treat in Clarion, 5-7 p.m. Clarion City Hall, (515) 532-2847.

NOVEMBER 2019

Sunday, November 3 – Daylight Savings Time ends!

Sunday, November 3 – Annual Gospel Fest. Music begins at 2:30 p.m., free-will soup and sandwich meal follows. United Church of Rowan, sponsored by Rowan Historical Society, (515) 293-1657.

Tuesday, November 5 – ELECTION DAY!

Wednesday, November 6 – Chicken and Biscuit Dinner at First United Methodist Church, serving from 11 a.m.-1 p.m., contact (515) 532-2845.

Thursday-Saturday, November 7-9 – A Kick off to the Holidays at participating retail businesses. Shop new winter and Christmas inventory with the potential for some great sales. Sponsored by the Clarion Chamber and Development. (515) 532-2256. www.clarioniowa.com

Thursday, November 7 – Ladies Night Out in Clarion. 4:30-7:30 p.m. at participating retail businesses. Great night of shopping and socializing. Double entries into the Clarion Lottery on this night. Sponsored by the Clarion Chamber and

Development. (515) 532-2256. www.clarioniowa.com

Saturday, November 9 – Annual Heartland Museum Craft Fair in Clarion, 9 a.m.-3 p.m. (515) 602-6000.

Saturday, November 9 – Belmond Area Arts Council Appreciation Supper at Jenison-Meachem Art Museum, northeast of Belmond. Dave Nelson, (641) 444-4635.

Sunday, November 10 – Wright County 4-H Awards Day at C-G-D High School. Wright County Extension Office, youth director, (515) 532-3453.

Monday, November 11 – Veterans Day celebrated at C-G-D High School, 10 a.m. Dennis Mraz, (515) 532-3330.

Monday, November 11 – Celebrate Veterans Day. Free admission to Heartland Museum for veterans. 10 a.m.-3 p.m. (515) 602-6000.

Monday, November 11 – Annual Veterans’ Day celebration in Dows, evening celebration (time not set), Dows Convention Center. Renee Holmes, (515) 460-1592.

Wednesday, November 13 – Church Annual Chicken and Noodle Dinner. Clarion United Church of Christ Congregational, office, (515) 532-2269.

Wednesday, November 13 – United Church of Rowan Escalloped Chicken and Biscuit Supper and Bazaar. 5 p.m. for supper; 7 p.m. for auction. Bonnie Leist, (641) 853-2482.

Friday-Sunday, November 15-17 – Iowa River Players presents “Gift of the Magi,” O. Henry’s beloved fable of the best Christmas gift. Community Theatre, 901 Broadway, Rowan. 7:30 p.m. curtain with Sunday matinee, 2 p.m. Contact LuAnn Krabbe, (319) 231-7828.

Saturday, November 16 – [Eagle Grove’s 59th Annual CRAFT FAIR](#). The event features over 50 crafters and vendors. Door prizes and cash prizes awarded by Retail Association. Call Eagle Grove Chamber of Commerce to reserve a table at (515) 448-4821.

Thursday, November 21 – ISH Pie Sale for Thanksgiving, begins at 11 a.m. until pies are gone, sponsored by Iowa Specialty Hospital Auxiliary, near Wildflower Café in Clarion.



OVER 150 YEARS OF PROGRESS



9 Hole Golf Course
Open to the Public



River City Park



Fountain City
Day
July 27



**ALL EXHIBITORS AND ALL
BRANDS ARE WELCOME
FREE OF CHARGE**

Located at the
**JENISON-MEACHAM
MEMORIAL ARTS
CENTER & FARMSTEAD**
From Belmond
2 miles north, 1 mile east

FAMILY FUN

SHUTTLE SERVICE

**PLENTY OF GREAT
FOOD ALL 3 DAYS**

Gates open at

7:00 am daily \$8.00

Children Under 5: FREE

gate price for all weekend



**IOWA STATE
PLOWING CONTEST**

Friday, August 16

Saturday, August 17

by Iowa Plowing Association

**STOCK ANTIQUE
TRACTOR PULL**

Saturday, August 17

(afternoon)

**SPARK SHOW
AND FIREWORKS**

Fri., Aug. 17 (dusk)

**IOWA STATE FAIR
CHAMPIONSHIP PULL**

Sunday, August 18

(all day)

QUILT DRAWING

for Prairie House Steps

Quilt By the Prairie

Homestead Quilters

**FEATURING
Minneapolis Moline Tractors & Equipment
All Makes & Models of Garden Tractors**

**GOLF CARTS
WELCOME**

\$5 Trail Fee

**GOLF CART
RENTALS**

641-444-4597

CHURCH SERVICE

Sunday 8:30 am

Contact Info:

Gas Engines & Models

Jerry Holmes

515-293-0379

Demonstrations And

Craft & Art Show

Glenella Kelley

515-851-2600

Tractor Pull

Mike Genrich

515-361-0806

Show Manager

Dave Nelson

515-571-6838

Friday Entertainment

JESSE ALLEN

in Conjunction with the

HAMBURGER &

SWEET CORN MEAL

5:30-7:30 pm

Saturday Entertainment

MOCKINGBIRDS

Sunday Entertainment

BRAD REVLAND

& FRIENDS

a tribute to WOODSTOCK



Belmond Area Arts Council on Facebook

1179 Taylor Avenue, Belmond, Iowa

belmondartscenter.org

ps2go.net

Friday-Sunday, November 22-24 – Iowa River Players presents “Gift of the Magi,” O. Henry’s beloved fable of the best Christmas gift. Community Theatre, 901 Broadway, Rowan. 7:30 p.m. curtain with Sunday matinee, 2 p.m. Contact Lu-Ann Krabbe, (319) 231-7828.

Monday, November 25 – Holmes Christmas Club Annual Auction begins at 6 p.m. at Chappy’s on South Main in Clarion. Call Chappy’s, (515) 532-2727 or Beth Menges, (515) 532-3378.

Thursday, November 28 – Clarion’s Community Thanksgiving Dinner at C-G-D High School, sponsored by Clarion Ministerial Association. Pick up free tickets at Clarion Super Foods several days prior to the event.

Thursday, November 28 – Annual Thanksgiving Dinner, Eagle Grove Memorial Hall. Freewill donations accepted.

Friday, November 29 – 28th Annual Christmas Parade of Lights. Parade down Main Street in Belmond. Fireworks start the parade at 6:30 p.m. with Santa as Parade Marshal. The Jolly Elf travels to the Santa House to meet children! Contact Belmond Area Chamber of Commerce, (641) 444-3937.

Saturday, November 30 – Small Business Saturday. 9 a.m.-4 p.m. at participating retail businesses. Great day of shopping and supporting local businesses. Sponsored by the Clarion Chamber and Development. (515) 532-2256. www.clarioniowa.com

DECEMBER 2019

Tuesday, December 3 – Iowa Specialty Hospital Auxiliary’s Scrubs and Uniform Sale, 7 a.m.-2 p.m. ISH Clarion Board Room. Contact Jordan Marker, (515) 532-9328.

Wednesday, December 4 – Light the Gazebo Night and Caroling, 5:30-7:30 p.m. at Gazebo Park and the United Presbyterian Church. Enjoy a night from a Hallmark movie with caroling, a community meal and the lighting of our community Gazebo! Sponsored by the Clarion Chamber and Development. (515) 532-2256. www.clarioniowa.com

Friday, December 6 – Christmas Coffee

at Security Savings Bank in Eagle Grove, Goldfield, and Clarion.

Saturday, December 7 – Jingle Jam, 9:30-11 a.m. at Clarion Library. Kids can shop for presents for their parents and grandparents. All items are \$5! Sponsored by the Clarion Chamber and Development. (515) 532-2256. www.clarioniowa.com

Saturday, December 7 – Rowan Christmas Tree Lighting and Soup Supper. Tree lighting at 5:30 p.m., Santa and Mrs. Santa arrive, soup supper at Community Center. Sponsored by Rowan City Council and Rowan Improvement Foundation, (641) 853-2345.

Thursday, December 12 – Holmes Christmas Club Fruit Basket Assembly and Distribution. Working out of Chappy’s on South Main in Clarion. Chappy’s, (515) 532-2727 or Beth Menges, (515) 532-3378.

Friday, December 13 – First Citizens National Bank Christmas Open House in Clarion, 9 a.m.-3 p.m. Traditional Christmas treats, coffee and punch, local entertainment and door prizes. (515) 532-2841.

Friday, December 13 – First State Bank/Town and Country Insurance Christmas OPEN HOUSE, 9 a.m.-3 p.m. Sherri O’Brien, (515) 532-2210.

Saturday, December 14 – Breakfast with Santa from 8-10 a.m. and Candy Cane Run from 9:30-11 a.m. Families can have breakfast with Santa and get photos taken at Hardees, then continue to participating businesses to collect holiday treats! Sponsored by the Clarion Chamber and Development. (515) 532-2256. www.clarioniowa.com

Some Saturday in December (tbd) – Breakfast with Santa and Free Movie at the Lyric Theatre. (641) 444-3937.

Saturday, December 14 – Dows Lions Club Soup Supper and Christmas Open House at Dows Convention Center, 5-7 p.m., bazaar, businesses open, Santa comes. Contact Shannon Muhlenbruch.

December (tbd) – Sip n Stroll in Eagle Grove. Sip some wine and enjoy some treats as you stroll through downtown Eagle Grove. Merchants will have Christmas specials to help you with all your shopping needs!

Some evening in December – Fareway Store in Eagle Grove OPEN HOUSE, 5-9 p.m., call (515) 448-3241 for confirmed date.

Some date in December – Christmas Party and Santa Visit at Clarion Public Library, (515) 532-3673.

Thursday, December 19 – Late night, last minute Christmas shopping until 7 pm at participating retail businesses in Clarion. Sponsored by the Clarion Chamber and Development. (515) 532-2256. www.clarioniowa.com

Friday-Sunday, December 20-22 – Three Nights of Lights. Jenison-Meachem Art Museum, northeast of Belmond. Dave Nelson, (641) 444-4635.

Sunday, December 22 – Extra day, last minute Christmas shopping from 12-4 p.m. at participating retail businesses in Clarion. Sponsored by the Clarion Chamber and Development. (515) 532-2256. www.clarioniowa.com

Tuesday, December 24 – Christmas Eve services at churches across Wright County; celebrating the birth of Jesus.

Wednesday, December 25 – MERRY CHRISTMAS!

JANUARY 2020

Wednesday, January 1 – Happy New Year, welcome to 2020!

January (tbd) – Eagle Grove Chamber and Community Development Corporation Annual Banquet and Allbaugh Award presentation. For more information visit our website www.eaglegrove.com.

Some date in January (tbd) – Live Healthy Iowa “10-week challenge.” Learn more at www.livehealthyiowa.org. [WWW](http://www.livehealthyiowa.org)



CHRISTMAS CLUB FOOD BASKET ASSEMBLY

calendar

FEBRUARY 2020

Saturday, February 1 – 3rd Annual Winter Fling Vendor Fair at Belmond-Klemme High School. Sponsored by Belmond Area Chamber of Commerce, (641) 444-3937.

Tuesday, February 11 – Valentine's Day Dinner Theatre. Enjoy an evening out with your sweetheart on Valentine's Day!



Tickets are \$25 per person. Sponsored by the Clarion Chamber and Development. (515) 532-2256, www.clarioniowa.com

Some date in February – Valentine's Party at Clarion Public Library, (515) 532-3673.

Some Sunday in February or March (tbd) – Annual Crossroads Youth and Family Center Annual Soup/Sandwich Fundraiser. Center on Main Street in Goldfield. Contact Craig Carlson, (515) 293-2767.

Monday, February 24 – 12th Annual Aaron Eilerts Day of Giving and Service. Celebrate Eagle Grove native Aaron Eilerts' birthday by serving as he did throughout his short life, before the Eagle Scout died in a tornado that tore through the Boy Scout Camp. Robert Blue Middle School and Middle School students, (515) 448-4767.

Tuesday, February 25 – Fat Tuesday Pancake Supper in Clarion (location/time to be determined). Sponsored by Clarion Ministerial Association.

MARCH 2020

Friday, March 6 – World Day of Prayer is celebrated.

Friday, March 6 – Masquerade Ball, 6:30-11 p.m. at The Red Shed Event Center. Wear your best dress, or suit, and a mask and enjoy a night of dancing, drinks and hors d'oeuvres. Tickets are \$50 in advance or \$60 at the door. Sponsored by the Clarion Chamber and Development. (515) 532-2256. www.clarioniowa.com

Saturday, March 7 – Wright County 4-H Fun Nite, 5-9 p.m., C-G-D High School. Wright County Extension Office, youth director, (515) 532-3453.

Sunday, March 8 – Daylight Savings Time begins!

Saturday, March 14 – Annual St. Patrick's Day. Celebrate in Rowan. Irish Stew served from 11 a.m.-12:30 p.m. at Rowan Events Center; parade at 1 p.m. Sponsored by Rowan Improvement Foundation. Lennea Groom, (515) 293-1657.

Some Saturday in March (tbd) – Firemen's St. Patrick's Day Dance in Dows.



Lawson Auto

Auto & Truck
Accessories, Bed Covers,
and Weather Tech.

Specializing in Collison Repair
& Quality Pre-Owned Vehicles

118 N Commercial Ave • Eagle Grove • (515)-448-3944

www.lawsonauto.com

Celebrating 23 Years
in Business
Locally owned

- Aluminum Repair Shop
- Axalta Water Borne Paint
- Pick Up & Delivery Service
- Wash & Vacuum Interior after Repairs

- Down Draft Paint Booth w/Baked Curing Cycle
- Frame Machine
- Computerized Paint Matching
- Computerized Estimates

Quality service you can count on!

- Oil Changes
- Tire Rotation
- Battery Checks
- Inspect Belts & Hoses
- Transmission Service
- Check/Replace Shocks & Struts
- Check Brakes
- Alignments
- Engine Tune Ups
- Light Auto Repair
- Suspension/All Types

FOR 24 HOUR EMERGENCY SERVICE 515-532-2444

HANSON & SONS

TIRE & AUTO SERVICE

CLARION

1501 Central Avenue East

515-532-2444

KANAWHA

122 E. First St.

641-762-3285

RANDALL

305 First St.

515-328-3189



Carry out available!

**618 South
Commercial Ave
(515) 448-4321**

M-Thu 6am-8:30pm

F & Sat 6am-9pm

Sun 7:30am-8:30pm



B&S CROSSING

Home of
Med Bread

...and great burgers, pizza,
chickent strips, and more

**316 W. Broadway,
Eagle Grove**

Call
448-5072



Grammar Attic
Vintage
& Retro

**209 W Broadway
Eagle Grove, IA
(515)851-0972**



The Eagle Grove Family Aquatic Center...

Something for everyone!

Hours

1 - 8 p.m.

Pool Rental

Call for details

448-4672



Goldfield Access Network

Your Connection to the World

Local Telephone Service ~ Long Distance
High-Speed Internet

Serving Clarion, Eagle Grove,
Goldfield, Humboldt, & Renwick

Contact Us for All Your
Telecommunications Needs
536 N. Main St. • Goldfield, IA
515.825.3766 • 800.825.9753

www.goldfieldaccess.net



gas & convenience

BELMOND

Casey's General Store
303 River Ave. S
(641) 444-4829

Yesway
112 River Ave. S
(641) 444-3235

CLARION

Casey's General Store
222 Central Ave. W
(515)-532-2099

North Central Co-op Card-Trol
1300 1st Ave. SE
(515) 532-2881 (main office)

Yesway
300 Central Ave. W
(515) 532-3524

DOWS

Casey's General Store
2721 Dows-Williams Road
(515) 852-3800

EAGLE GROVE

Ampride
215 N Commercial Ave.
(515) 603-6412

Casey's General Store
200 S Commercial Ave.
(515) 448-9964

Cenex/Ampride
215 N Commercial Ave.
(515) 603-6412

Kum & Go
1220 S Commercial Ave.
(515) 448-4151

Lyle's Ford-Mercury
1000 S Commercial Ave.
(515) 448-5171

W&H Cooperative
114 E Broadway
(515) 448-5017

GOLDFIELD

Casey's General Store
319 Highway 3 E
(515) 825-3470

WOOLSTOCK

W&H Cooperative
200 W Nellie St.
(515) 839-5620



ENJOYING WRIGHT COUNTY

Park Rangers Bruce Lindner, Eric Rector, Jake Schaben & Jeremiah Feltz

Wright County's Park Rangers invite county residents and guests to enjoy the Wright County open spaces owned and operated by the county. They (along with summer part-time help) work to assure that everyone has fun while using recreational and conservation facilities, as they mow, trim and groom all the areas, awaiting any guests.

The county has four glacial lakes: Wall Lake, Morse Lake, Elm Lake and Lake Cornelia. Lake Cornelia is by far the most popular area, located six miles northeast of Clarion, and about the same distance southwest of Belmond. Something new for 2019 is a kayak launch in the Quiet Water area, located north of Lake Cornelia. Belmond Eagle Scout Jesse Brown is heading the work on the project, which is targeted for completion in the early spring. The county now has two kayaks available for public use: \$10 for ½ day and \$15 for full day rentals.

The free fishing weekend, hosted by the state of Iowa, the first weekend in June, is an annual hit. This year it is Friday-Sunday, June 7-9; no licenses are required for any Iowa resident wanting to fish those three days. No licenses are required annually for youth under 16 years of age. Wright County residents or visi-

tors without fishing equipment can access fishing equipment from the Wright County Conservation staff. To assure getting fishing gear, or to rent kayaks, call (515) 532-3185 (fishing equipment is free).

Don't hesitate to grab a fishing pole and head, not only to a county lake, but to one of the rivers. Bullheads, large-mouth bass, walleye, crappie, yellow and white bass are all possibilities. Northern pike keep spring and fall fishermen on the prowl off the banks of the Iowa and Boone Rivers, while small-mouth bass and catfish provide summer fun. Ice fishing in the winter helps to provide year round entertainment. It has been pretty good the past few winters.

Hunters looking for birds can find pheasants, partridges, doves, wild turkeys and waterfowl. Deer, cotton-tailed rabbits, fox and squirrels can be hunted in Wright County. Don't hesitate to track down a coyote or two during winter snow falls!

Outdoor fun continues with boating, canoeing, kayaking, biking, and camping during the summer months. Along with ice fishing, winter brings snowshoeing, cross-country skiing and snowmobiling. Anyone who would like to try some winter activities, but doesn't have the



right equipment, can use county-owned equipment, including dozens of pairs of ice skates and snow shoes, which can be loaned.

Rangers can be reached from 7:30 a.m.-4 p.m. weekdays; email wccb@co.wright.ia.us any time for information or to have questions answered. When borrowing equipment, be sure to contact them ahead of time to be assured the desired items are ready upon your arrival at the Lake Cornelia Conservation office.

FISHING LICENSE FEES

Iowa residents:

Lifetime (65 and older): \$61⁵⁰

Annual (16 and older): \$22

Angler's Special (3-year license): \$62

Kids (15 and younger): **FREE**

7-day license: \$15⁵⁰

1-day license: \$10⁵⁰

Non-residents:

Annual (16 and older): \$48

7-day license: \$37⁵⁰

3-day license: \$20⁵⁰

1-day license: \$12

Kids (15 and younger): **FREE**

HUNTING LICENSE FEES

Iowa residents:

Lifetime (65 and older): \$61⁵⁰

Annual (16 and older): \$22

Hunter's Special (3-year license): \$101

Hunting/Habitat: \$35

Hunting/Fishing/Habitat: \$55

Non-residents:

Annual (18 and older): \$144

Annual (17 and younger): \$45

*Hunting (5-day; 18+): \$77

*Hunting/Habitat (5-day; 18+): \$90

*Non-resident, 5-day hunting licenses not applicable to deer or turkey seasons.

BUY A LICENSE IN

Belmond

True Value Farm and Home

Clarion

Wright County

Recorder's Office

Dows

Dows Community Grocery Store

Eagle Grove

J&J Sports

Information provided by:

www.iowadnr.gov

For additional information on fishing/hunting licenses, specialty licenses, or to purchase licenses online, go to the above website.



The most used and best-loved outdoor recreation area by county residents and visitors alike is Lake Cornelia, located six miles northeast of Clarion and seven miles southwest of Belmond. The Lake Cornelia Park, a 122-acre recreation area, provides boat and picnicking areas, playground and play field areas, shelter houses, electricity, water, showers, modern restroom facilities, wireless internet available throughout the park and camping area, and pit latrines for day-users, as well as campers. The Lake is a favorite fishing spot in the county.

CAMPGROUND

The Lake Cornelia Campground has 70 camping units in the park with wireless internet; eight are situated directly on the north side of the lake. The additional 62 sites are located farther north of the lake, all include electricity and rent for \$17 per day. Thirty-two include water and sewer; which rent for \$22 per day. There are new modern restrooms and showers

in the east portion of main camping area. Building doubles as a storm shelter, able to withstand up to 250 mph winds. Most weekends in the summer, the park is live-with camping guests.

The 1½ acre quiet water provides off-lake boat parking for day use boaters.

WALKING/BIKING TRAIL AND QUIET WATER

In 2017, county workers added 12 inches of gravel in the Quiet Water Harbor. This provides a nesting area for several kinds of fish to help populate fishing for enthusiasts to Lake Cornelia.

Campers with boats on the north side of Lake Cornelia are allowed to moor boats overnight, a nominal fee is charged.

A walking/biking trail nearly circles the lake. Prairie plantings of native grasses and flowers wind along the west side of the walking trail. Look for an array of grasses and flowers blooming throughout the year.

RENT SHELTERS

Enclosed and open-air shelters are available for rent at Lake Cornelia. The roof-topped, open-air shelters can be used on a first-come, first-serve basis. Cost is \$10 to reserve the shelters for groups and family gatherings.

The enclosed shelter at the north end of Lake Cornelia can be reserved for a variety of events. The 40-foot by 60-foot structure has a capacity of about 100 people and can be used for holidays, celebrations, organizations, corporate functions and family gatherings. Rental is \$90. Fee is to be paid ten days after reservation is made to hold the reserved date. The shelter is rented nearly every weekend from May through October.

For more information, or to make reservations for shelters and camping areas, call the conservation office, (515) 532-3185, office hours are 7:30 a.m.-4 p.m., or email the office at wccb@co.wright.ia.us.

other recreation areas

FRANKLIN GROVE HERITAGE TRAIL

East Belmond - Through the heart of Belmond runs the Franklin Grove Heritage Trail. It offers nearly two miles of asphalt paved walking/biking trail with extensive landscaping and natural beauty. The trail, which winds south through a nicely wooded area and beautiful homes, will take a dog-leg southeast of the Belmond Cemetery. The ¾-mile extension will be a straight path in a wooded area, overlooking Luick's Creek, making a better connection to Franklin Grove Wildlife Area. Plans for completion are fall of 2019.

Franklin Grove Heritage Trail is connected to Prairie Lands Trail, north of the existing bike and walk path. The recent one-mile extension will eventually connect through the countryside and make its way to Mason City, making nearly 30 miles of biking and walking paths available. Prairie Lands Trail will be a limestone path.

THREE RIVERS TRAIL

Near Eagle Grove - The Three Rivers Trail, just northwest of Eagle Grove, travels along the west fork of the Des Moines River. The historic trail offers visitors miles of uninterrupted woodlands, marshes, river valleys and open prairies.

The trail is 33 miles long. Three Rivers Trail can be used for hiking, nature viewing, biking, cross-country skiing and snowmobiling.

THREE DISC GOLF COURSES

River Disc Golf Course, located in the heart of River Park in Belmond, is a nine-hole disc golf course constructed by Andrew Lovgren in 2006 as an Eagle Scout project.

The course is par three. For more information on this sport, which is growing in popularity for individuals and tournaments, check the website: www.pdga.com.

Clarion-Goldfield-Dows High School Disc Golf Course, on the west side of the high school grounds, 1111 Willow Drive in Clarion, was a Life Project of 2014 graduate Juan Salas. While the nine-hole course is playable, court signage is pending.

Eagle Grove at Greenwood Park, 212 2nd St. NE, Eagle Grove. Greenwood Park Disc Golf Course is a newer nine-hole course that was a Eagle Scout project of Kayne Carlson in 2017.

NORTHERN IOWA GREENBELT SCENIC DRIVE

The Northern Iowa Greenbelt Scenic Drive runs through 50 miles of rolling hills and gentle swells of the Iowa River Valley. Watch for the signs posted in Wright County.



There are many open spaces and places to enjoy in Wright County.

Big Wall Lake – Located five miles east and seven miles south of Clarion, is a 907-acre marsh and is open to hunting and trapping. There are also 73 acres of timber and upland habitat available. The state of Iowa maintains three access areas to the lake.

Bingham Park – With 18 acres of timber, parallels the Iowa River south of Rowan. An excellent opportunity for the naturalist. Amenities include restrooms, shelter house, water and picnic tables.

Boone River Greenbelt – Two hundred seventy eight acres located four miles south of Eagle Grove and ½-mile east of the Troy Rest Area, is a river corridor which includes an oak and hickory forest, open grassland, floodplain forest and newly-seeded prairie. See Wright County wildlife, go fishing or canoeing. Also open for hunting and trapping.

Elm Lake – Featuring 619 acres of lake, marsh and upland habitat, the lake is located two miles east and two miles north of Clarion. The state provides a public access on the east side of the lake and is open to hunting and trapping.

Elm Lake Access – The access is 58 acres of wetlands and upland wildlife habitat in two tracts on Elm Lake. North tract provides lake access and parking. Open to hunting and trapping.

Morse Lake – This 108-acre shallow lake-marsh is five miles west of Belmond. The area also contains 64 acres of upland habitat and marshlands that are open for hunting and trapping. The Lower Morse Lake Waterfowl Protection Area adds another 1,900 acres to the wildlife habitat area. A renovation plan set for 2019 will regulate and monitor the water levels of the lake to improve fishing and hunting in the area.

Oakdale Park – 127 acres located one mile east and 1½ miles south of Renwick along the Boone River, is a timbered area. Amenities include two shelter houses, modern restrooms, barbecue facilities, water, electricity and playground equipment, plus camping areas.

Pike's Timber – A heavily-timbered, 46-acre park and wildlife area, is located ½ mile east and ½ mile south of Lake Cornelia. The area, with the Iowa River flowing the length of the park, has three shelter houses, restrooms, electricity, water and playground equipment available.

Troy Roadside Park – this one-acre roadside park three miles south of Eagle Grove on Highway 17, has access to the Boone River and can be used for fishing and canoeing.

White Fox Creek Game Management – Featuring 106 acres, it is located ½ mile north of the French Church, off county road C70, three miles east of Woolstock. The area was acquired from the Kent and Muriel Gearhart family in the fall of 2018. Now open to the public for hunting, bird watching and hiking.

Three large state-owned lake areas are

within the borders of Wright County, which the county conservation employees maintain.

These, and an additional 27 parcels of land (20 owned by the county; seven owned by the state DNR), are maintained by the Wright County Conservation officers. Most public use areas are open to the public for fishing. Some areas are set aside for public hunting. Others are refuges for wildlife. Bird watching, biking, hiking and cross-country skiing are encouraged.

For more information, contact:

Wright Co. Conservation Board

1768 O'Brien Avenue

Lake Cornelia Park

Clarion, Iowa 50525

(515) 532-3185

FAX - (515) 532-6068

EMAIL - wccb@co.wright.ia.us

Or visit the new Wright County website at www.wrightcounty.org, click on the Services tab and look under CONSERVATION.

To find more information on county parks in all 99 counties, go to www.mycountyparks.com for a complete listing.



To prevent the spread of aquatic invasive species you should follow the actions listed below as required by state law in Iowa and many other states:

Clean all vegetation from watercraft, trailers and equipment before leaving a water access.

Drain water from boat, livewell, bilge, ballast tanks, bait bucket and other equipment holding water before leaving a water access. Drain plugs and other water draining devices must be removed and remain open during transport. If you want to keep live bait when leaving a water access, you must replace water in bait containers with tap or bottle water.

Dispose of unwanted bait in the trash. It is illegal to release bait into a water body and to release aquatic animals from one waterbody into another. Anyone caught transporting vegetation from one body of water to another can be ticketed and fined.

Residents and guests in Wright County have the opportunity to enjoy five beautifully landscaped and continually upgraded nine-hole golf courses. Seize the opportunity to enjoy the summer and outdoors! All five courses have nicely decorated clubhouses with green fees, cart rentals and no tee times. Memberships are always available. Golfers are encouraged to call ahead to assure the courses are not closed due to a tournament.



Belmond Country Club

1608 3rd St., NE
1½ miles east
off Luick's Lane N.
(641) 444-4183

Clarmond Country Club

1776 Page Ave.
Lake Cornelia
(515) 532-2911

Dows Golf Course

200 85th Street
(515) 852-4751

Eagle Grove Golf Course

1127 270th St.
(515) 448-4166

Oakridge Recreation

Oakridge Rd.
Goldfield
(515) 825-3611

**Use this book all year
as your guide to**

FUN & EXCITEMENT!



The Wright County Monitor

In Print & Online • 515-532-2871
www.clarionnewsonline.com
107 2nd Ave NE, Clarion, IA 50525



Be a Know-It-All with the Wright County Monitor!

IN WRIGHT COUNTY

Lower Morse Lake Grassland and Bird Conservation Area Morse Lake Area

The Lower Morse Lake Grassland and Bird Conservation Area should be on your “see and do” list. The area was established in 2009 and includes over 3,000 acres of prime wildlife habitat.

There are more than two dozen public access areas available to help visitors watch and enjoy hundreds of birds, animals and insects. Wright County Conservation officials say bird watching in the county is becoming more and more popular. To enhance the enjoyment of bird watchers, a newer Bird View Blind has been added just north of Lake Cornelia’s enclosed shelter. There are three feeders to attract even more birds for watchers to identify and enjoy.

This is just one of many county facilities the conservation staff invites residents and visitors to enjoy.

Wright County Freedom Rock Dows

A must see, the rock, located in Dows on East Ellsworth Street, is #32 painted by Ray

“Bubba” Sorensen II. The Freedom Rock, honoring all Veterans of Wright County, was painted in August 2015 and depicts two scenes. The front has a Civil War Union soldier and a present day serviceman; the other scene is dedicated to the Vietnam Veterans who deserved to be “Welcomed Home.”

Surrounded by engraved pavers honoring servicemen and women from all branches of the military and encompassed by recently installed retaining walls, the rock has two sidewalks leading up to the tribute. Wright County residents continue to show their support for veterans with flags from the various branches of the military flying high above the monument. The nighttime lighted view is breathtaking. Paid for by generous donors with no government funds.

Jenison-Meacham Memorial

BELMOND

Art Center & Museum

1179 Taylor Ave., Belmond

www.belmondartscenter.org

Two miles north of C-20

The Jenison-Meacham Art Center, located

on 120 acres of farmland and opened in 1983, is owned and operated by the Belmond Arts Council. Its mission is to preserve and exhibit objects related to the Wright County area.

The farmstead, preserved to represent farming in the early 1900s, includes a restored farmhouse, a large 1900 barn, antique farm equipment, as well as many agricultural artifacts. Join volunteers and exhibitors on Friday-Sunday, Aug. 16-18 for its 30th Annual ‘Prairie Homestead Antique Power and Craft Show hosted on the farm. Features: Minneapolis Moline tractors and equipment, all makes and models of garden tractors, Iowa State Plowing Contest (Friday and Saturday), Stock Antique Tractor Pull (Sunday), Iowa State Fair Championship Pull (Sunday). Musical entertainment by Jessi Allen (Friday), Mockingbirds (Saturday), Brad Revland and Friends (Sunday), Cowboy Church at 8:30 a.m. Sunday.

Guest artist’s works are exhibited each month in the museum. Photography, watercolors, woodcarvers, quilters, sculptors and rosemaling exhibits are some of the works which have been displayed. The museum also includes artwork and collections of Cloe Jenison. Open hours are 1:30 – 4 p.m. on Sunday from May through October. Other times can be arranged by appointment, call (641) 444-4635, (515) 571-6838 or (641) 444-4319.

Belmond Historical Museum 223 E Main St.

Learn about Belmond’s past, present and future at the Belmond Historical Museum. Discover the impact the sugar beet industry had on the community one hundred years ago. See a salute to Belmond’s veterans. Revisit the chaos of the devastating 1966 Belmond tornado. Walk down memory lane with Belmond and its residents. Be sure to visit our restored Rural School in River Park. Open Monday, Wednesday and Friday from 9 a.m. until noon; other times by appointment.

The Belmond Chamber of Commerce makes its home in the Historical Museum. Open weekday afternoons from 1-3 p.m.; its best to call for appointments to assure availability. Belmond Chamber of Commerce, (641) 444-3937.



Main Street

The Christmas themed house sports the December holiday all year. For more complete information, contact Max Peterson at (515) 571-0405.

119 9th St. SW

Heartland Museum has a variety of exhibits and displays that will entertain and delight everyone. The museum boasts re-

Visitors come from around the world to visit the museum. Open Memorial Day through Labor Day, Monday-Saturday, 10 a.m.-3 p.m. Open year round by appointment. Call (515) 602-6000 for more information.

119 9th St. SW

The schoolhouse museum has been

302 S Main St.

The building, which now houses the



Clarion Chamber and Development, is available for rent for meetings (use is free for members). Tours are available by appointment. Office hours and open times are weekdays from 9 a.m.-1 p.m. For more complete information, call (515) 532-2256.

DOWS

Evans Prairie House Dows Historic District

The Ingebert Evans family immigrated to the United States, planting roots in Dows. Descendants of the Evans family have restored the two-room, two-story, 14 by 16-foot home, which includes original furnishings. The home is open year-round for self-guided tours. Stop at the Welcome Center for guided brochures and to access the home call (515) 852-4327. Can't be toured during the winter months.

Mercantile Building Dows Historic District 122 E Ellsworth St.

One of three National Historic Register buildings is the Dows Mercantile Building, located one block south of the Dows Welcome Center and Depot.

Originally known as the Fillmore Building, it was constructed in 1884. Shop at one of the three floors of antiques from area dealers and collectors. Among other treasures to be found are Iowa-made products, Iowa wines, gift items and souvenirs. The Crème de la Crème lunch area, located within the building, is a great stop for ice cream, homemade soups, sandwiches and other sweet treats. Contact phone number – (515) 852-3533.

Quasdorf Blacksmith Shop Museum

Dows Historic District

Across the street, west of the Dows Depot/Welcome Center

The Quasdorf family owned and operated the Wright County blacksmith shop, beginning in the 1880s, for nearly a century. This is the third building on the National Historic Register.

Visitors are asked to step back in time when they enter the shop. Displays include machines, tools, belt-driven and electric welding equipment, original wagon wheels, blacksmithing items, forge and huge bellows; left much like it was in its fully-operational days.

Each year during Dows Annual Corn Days, the first full weekend in August, a blacksmith is in residence demonstrating how the work was done a century ago. Said to be one of the best-equipped blacksmith shops in the Midwest, there is no admission charge for the self-guided or guided tours of the museum. Tours can be arranged by appointment; most days volunteers are available at the blacksmith museum. For more information, contact the Mercantile at (515) 852-3533, or city hall at (515) 852-4327. Can't be toured during the winter months.

Vernon Schoolhouse #5 Dows Historic District

Vernon Schoolhouse #5, located south of the Dows Welcome Center & Depot and northeast of the Dows Mercantile, is a prime example of rural schoolhouses and education of young students in Iowa during the late

19th and early 20th centuries. Moved from its original rural setting into Dows, it is now part of the community's Historical District. Visitors step back in time with memorabilia gracing the walls and shelves of the school. Contact the Welcome Center to tour the facility, (515) 852-3533; or city hall, (515) 852-4327. Can't be toured during the winter months.

Welcome Center and Rock Island Depot Dows Historic District 100 West Train Street

Another Dows building on the National Historic Register, the Rock Island Depot houses one of Iowa's Welcome Centers. Built in 1896, it was the first depot built to

serve the residents of Wright County. It operated until 1980.

Now, the restored depot is furnished with railroad memorabilia and historical items. Hundreds of visitors register at the Dows Welcome Center annually. Amenities include public restrooms, travelers' information, internet access and a gift shop with hand-made items, Iowa souvenirs and gifts. Open from April 1–November 1 from 9 a.m.–4:30 p.m. Closed during the winter months, but would be open by appointment. For more information, call the Rock Island Depot Welcome Center at (515) 852-3533. Can't be toured during the winter months.

Ryerson Realty, LLC

2761 Country Lane Circle • (Hwy 17) Eagle Grove, IA • 515-448-3079



Call us for all your Real Estate needs.

We can also help with your Farmland & Machinery Auctions



Mike ~ 689-3728 • Deb ~ 689-3715 • Lisa ~ 851-1843
www.ryersonauctionrealtyltd.com

attractions

EAGLE GROVE

Eagle Grove Historical Museum 401 West Broadway

Eagle Grove's Carnegie Library is the home of the Eagle Grove Historical Museum. Built in 1903, the museum is on the National Register of Historic Places. Work on the museum has continued for a number of years and is ready for visitors to enjoy. For information regarding the museum, contact Ron Mohr at (515) 293-1427.

Veterans Memorial Tower

A "no longer used" Eagle Grove grain elevator is being transformed into a community memorial honoring local military veterans. The west wall recognizes Iowa Governor Robert Blue and Bravo Battery, both originally from Eagle Grove.

The east wall will illustrate great sacrifices made by courageous veterans over the years. South wall plans include a mural depicting things made in Eagle Grove, agriculture, the railroad and the local Norwegian heritage.

For complete information, contact Daryl Watts at (515) 448-3358 or via mail to P.O. Box 126, Eagle Grove, Iowa 50533.



GOLDFIELD

Boone River Rapids River Park

One of the most improved areas in the county in the past few years is Boone River Rapids. The nearly destroyed dam area has been transformed in a 120-foot long river rapids, in west Goldfield. It is now available for water rafting and tubing, depending on water levels. Also completed in the last two years are canoe access areas, a new shelter house, new picnic tables and benches. There is additional lighting for night water floats in the summer time.

Set for the first part of July 2019, "Project Aware" will come to the Boone River. Each year a different water shed area is selected for clean up. The week-long project will begin in Goldfield on Sunday, July 7, at the River Park. Canoes then begin their float as volunteers fish out tires, plastic refuse and appliances, which may have been discarded illegally. Efforts will end the first day near the new Prestage Foods facility. The float continues through July 12, ending near Stratford. Volunteers come from across the state; local volunteers are encouraged as well.

For more information, contact Greg Soenen, (515) 603-9011, or Joe Skinner, (515) 825-3192.

Crossroads Youth & Family Center 502 North Main, Goldfield

This family fun center is a great place to meet friends of any age in a controlled and safe environment. Open Family Night and Saturday evenings (6:30 – 8:30 p.m. for young people eighth grade and under; 8:30 – 11 p.m. for high schoolers) and open afternoons on 'early outs' from school.

They are also open for yoga and exercise classes. Other times by appointment or for scheduled events.

Amenities include a snack bar that serves pizza, burgers, sandwiches, chips, sports drinks and more. All games are free, including pool, air hockey, ping-pong, foosball and carpet ball. The big screen television is for viewing favorite sports or events with plenty of seating in our commons area. A 750 watt music sys-

tem is available for entertainment. Full HD, surround sound movie experience on our 100-inch movie screen for all the community to enjoy. An outside courtyard has a full basketball court and grass area for volleyball, dodge ball and other outdoor games. For more information, or to rent the facility for birthday parties, private parties and other group events call Craig Carlson at (515) 825-3383.

Log Cabin

North Main Street

Known as the "Log Cabin" by Goldfield residents, it was built in 1926 and restored by Goldfield Boy Scout Troop #49 in 1976. The cabin is in the process of being renovated by the Scout troop as an Eagle Scout project of one of its members; work will be completed by May 1, 2019. Located on the east side of Main Street, the building is open daylight hours for viewing by contacting Goldfield City Hall, (515) 825-3613. Open annually during Goldfield's Fountain City Days in July.

ROWAN

Rowan Historical Museum 107 Main Street

The Rowan Historical Museum Society has worked hard to provide a location to learn more about Rowan and the surrounding rural community and its past. Currently open by appointment. Contact Lennea Groom at (515) 293-1657 or lennea.groom@gmail.com for more information.





**1-800-HEY-MORT
(439-6678)**

**WATER
TREATMENT**



**RESIDENTIAL, COMMERCIAL
AND AGRICULTURAL**

**PUMP & WELL
INSTALLATION AND REPAIR
SEPTIC SYSTEM INSTALLATION
AND SERVICE
TIME OF TRANSFER &
SEPTIC PUMPING**



**1-800-579-MORT
(6678)**

**GEO THERMAL
HEATING &
COOLING**



BRAD LEWIS CO-OWNER

**RESIDENTIAL AND
LIGHT COMMERCIAL**

**PLUMBING, AIR SOURCE HEAT
PUMPS, FURNACE & CENTRAL
AIR AND DUCT CLEANING**

www.mortsonline.com

Kent Morton, Owner

BANK AND ATM LOCATIONS



BELMOND

Casey's General Store
303 River Ave. S

Corner Restaurant & Lounge
207 E Main St.

First State Bank
304 E Main St.

Eaton Corporation
700 Luick Lane S

Greenbelt Bank & Trust
120 E Main St.

Spare Time Lanes & Lounge
203 2nd Ave. SE

Yesway Convenience Store
112 River Ave. S

CLARION

Casey's General Store
222 Central Ave. W

Clarion Super Foods
325 Central Ave. W

First Citizens Bank
315 Central Ave. E

First State Bank
714 Central Ave. E

Security Savings Bank
322 Central Avenue East

Wells Fargo Bank
119 Central Ave. W

Yesway Convenience Store
312 Central Ave. W

DOWS

Casey's General Store
2721 Dows Williams Road

United Bank & Trust
100 W Ellsworth St.

EAGLE GROVE

Ampride
215 N Commercial Ave.

Casey's General Store
200 S Commercial Ave.

First State Bank
323 S Commercial Ave.

Kum & Go Convenience Store
1120 S Commercial Ave.

Security Savings Bank
201 West Broadway

Smoke Shop
110 West Broadway

Wells Fargo Bank
121 N Commercial Ave.

GOLDFIELD

Casey's General Store
319 Highway 3 E

Security Savings Bank
435 N Main St.

AGP[®]

A Cooperative

Eagle Grove, Iowa

BAR & GRILL

Food, beverages
darts, pool, music
fun times



THE DEPOT...

Perfect for weddings,
graduations, reunions
and so more

RAILS

BAR & GRILL

OPEN DAILY AT 11AM
515.503.6899
TAKE OUT OPTION AVAILABLE!

220 RAILROAD AVE.
EAGLE GROVE, IA 50533
CHECK OUR PAGE FOR UPCOMING EVENTS!



RIGHT PLACE, WRIGHT COUNTY



ECONOMIC DEVELOPMENT

115 N. Main Street • P.O. Box 214 • Clarion, IA 50525
515.532.6422 • Email: wced@co.wright.ia.us • wrightcounty.org

With many thanks to our partners



City of Belmond • Ennis Corporation • First State Bank
Town & Country Insurance • Green Belt Bank & Trust • ISG
Henkel Construction • North Central Cooperative
Ryerson Auction & Realty, Ltd. • City of Goldfield

BELMOND

DVD Rental Kiosk

Fareway
512 River Ave.
(641)-444-3034

Luick Memorial Swimming Pool Extreme Sports/Tennis Courts

908 1st St. SE
Seasonal (641) 444-3389
(641) 444-3386 - City Hall

Lyric Theatre

431 E Main St.
(641) 444-7225
(641) 444-3612 - Manager

Red Box DVD Kiosk

Dollar General
404 River Ave.
(641)-444-4555

Spare Time Lanes & Lounge

203 2nd Ave. SE
(641) 444-4141

CLARION

Clarion Aquatic Center

618 5th St. NE
(515) 532-2315
off season – (515) 532-2847 City Hall

Clarion Theatre

115 1st Ave. NE
(515) 602-6606
www.clariontheater.com

InstaFlix DVD Kiosk

Clarion Super Foods
325 Central Ave. W
(515) 532-2829

Red Box DVD Kiosk

Dollar General
1102 Central Ave. E

DOWS

Dows Swimming Pool

Dows-Williams Road
(515) 852-4644 or
(515) 852-4327

EAGLE GROVE

DVD Rental

Fareway
205 NW 1st St.

Eagle Aquatic Center

Greenwood Park
(515) 448-4672

Eagle Bowl

305 NW 11th St.
(515) 448-4586

ROWAN

Iowa River Players Theater

901 Broadway, Rowan
business address:
P.O. Box 22
Belmond, IA 50421
www.iowariverplayerstheater.org



lodging

BELMOND

Big Red Quilt House B & B

403 6th Ave. NE

(515) 571-6310 or (319) 231-7828

bigredquiltthouse@frontier.com

CLARION

Clarion Hometown Inn

1001 Central Ave. W

(515) 532-6647

www.clarionhometowninn.com

Clarion Boulders Inn & Suites

500 Central Ave. W

Clarion, Iowa 50525

(515) 602-6634

Toll free – (844) 602-6634

Fax – (515) 602-6635

www.bouldersinnclarion.com

info@bouldersinnclarion.com

EAGLE GROVE

Sandman Hotel

Highway 17 N

(515) 448-4751



REFLECTIONS
A SELF-TOUR SALON

Hair

Nails

Waxing

Make-up

Hours

Monday - Thursday

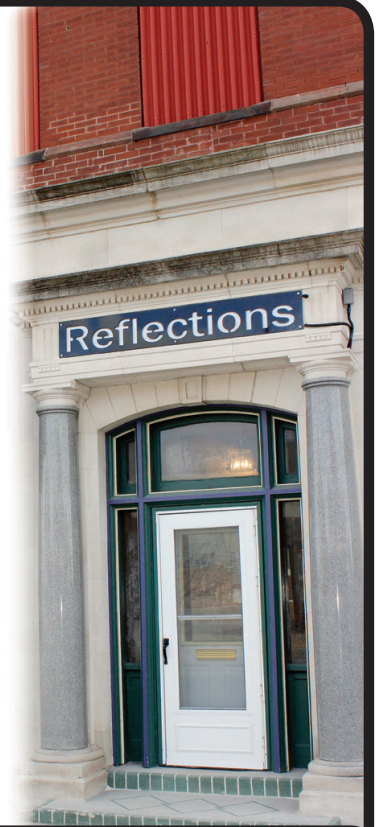
9 a.m. to 8 p.m.

Friday

9 a.m. – 3 p.m.

Special Occasion

Saturdays.



200 W. Broadway, Eagle Grove

515-603-6494



HOURS
Mon- Sat
11:00 a.m.
to 8:30 p.m.



1101 S Commercial
Eagle Grove, IA
(515) 851-9140

**Check out our mobile food truck in
Clarion Summer 2018**

IOWA STATE UNIVERSITY
Extension and Outreach

WHAT WE WANT

#STRONGIOWA

Wright County 515-532-3453
www.extension.iastate.edu/wright

Iowa State University Extension and Outreach programs are available to all without regard to race, color, national origin, religion, sex, age, or disability. EOADV.15.46D June 2016



EWING
FUNERAL HOME & MONUMENT COMPANY

BRITT • KANAWHA • CLARION • BELMOND • DOWS

Ewing Funeral Home is a family owned and community minded funeral home, with five locations serving Britt, Kanawha, Clarion, Belmond, Dows, and the surrounding communities.

Contact Us

Britt 641-843-3839	Kanawha 641-762-3211	Clarion & Dows 515-532-2233	Belmond 641-444-3248
------------------------------	--------------------------------	---	--------------------------------

www.ewingfh.com

Belmond Iowa River RV Park – 312 River Ave. S (U.S. Highway 69) Just over one acre in size and within walking distance of convenience stores, fuel stations and restaurants. There are 16 RV sites, eight with full hook-up (water, sewer and electric), five of which are pull-through sites, and eight having just water and electric connections. A small area is available for tent camping.

A modern toilet/shower building is available on site for campers and a dump station near the entrance of the park for RV/campers. Canoes can be launched from River Park, which is adjacent to the RV park and connected with a trail. Full hook-ups are \$12 per night, partial hook-ups are \$10 and tent camping is \$8. (641) 444-3386.

Dows Pool Park Campground – The Dows camping area has 11 spaces available and is adjacent to the Dows Swimming Pool. Electricity, showers, bathrooms, shelter house and wastewater dump area. Pull-through camp spaces, \$15 per day; \$3 for tents; self-registration. For more complete information, contact City Hall at (515) 852-4327.

Lake Cornelia Campground – The Lake Cornelia Park Campground, located on the north side of Lake Cornelia, has 70 camping units in the park; eight located directly on the lake - 62 units are located farther north of the lake area. All of the sites are served by electricity; rental is \$17 per day. Thirty-two of the sites also include water and sewer; rental is \$22 per day. No limit to the number of days campers

may rent (may be requested to change camper site). Wireless internet available throughout the park and camping area.

Most weekends in the summer the park is lively with area camping guests. Most recently, new restrooms (doubles as a storm shelter with capacity of 50 withstanding winds up to 250 mph) were added in the east portion of the park campground; private shower stalls, restrooms on both sides of the building, handicapped accessible. For more complete information, contact the Wright County Conservation Office at (515) 532-3185. Email address: wccb@co.wright.ia.us. Office hours are weekdays from 7:30 a.m.-4 p.m.

Oakdale Campground – Northwest corner of Wright County, two miles south of Renwick or five miles north of

Goldfield. Five electric camp sites; other areas are primitive. Self check-in with \$10 daily deposit in pedestal receptacle. For more information, contact Wright County Conservation at (515) 532-3185.

Wright County Fairgrounds – Sixty camping spaces are available at the Wright County Fairgrounds (all sites have electricity; a few sites may have sewer and water hook-ups soon) in Eagle Grove, 1000 E. Broadway (just east of Greenwood Park). For camping information, contact (515) 448-3351. Camp spots are booked during the fair dates; other times during the summer they are open for booking. Consider renting spaces for family reunions, class reunions, as well as other camping opportunities.

Broadway Vision Source

Dr. Brandon Hauck



We diagnose and treat eye infections and diseases as well as routine care to maintain long term healthy vision. Stop in and let our very experienced and friendly staff help you see a clearer future.

**300 W Broadway St.
Eagle Grove, IA
515-448-3813**

Hours: M,W,T 8-5
Tuesday 8-7
Friday 8-1

We accept VSP, EyeMed,
Avesis, Medicaid
and nearly all
medical insurances.



BELMOND

Belmond City Park – 212 2nd St. NE. Located just one block north of East Main Street and one block east of River Avenue North, on a full city block. A leisure recreation park covered almost entirely with tree shade and has play equipment, a shelter, restrooms, gazebo, tables and benches.

Swimming Pool Park – 908 1st St. SE. Located at the municipal swimming pool on a piece of property of 5.3 acres. The park has two shelters with picnic tables and play equipment for ages two to five and five to eight years old. This equipment was purchased in 2006 with a grant from the Luick Trust and installed by community volunteers. Restrooms are located on the outside of the pool bathhouse. Pool Park is the location of three tennis courts and the Extreme Sports Park which is equipped with ramps, rail and quarter pipe.

Ballfield Park – 804 Luick's Lane N on 5.594 acres. There are two ball fields on the park, one of which is lighted. There are restrooms, concession stand and equipment storage on the park property as well. The park is located adjacent to the Belmond-Klemme Community School District's softball and baseball fields to allow for terrific tournament play.

River Park – A large park of 12 acres reserved mainly for passive recreation. There is a Disc Golf Course, two shelters with picnic tables, restrooms, canoe access to the Iowa River and a trail through the park. River Park is adjacent to the Iowa River RV Park, connected by a trail. Be sure to visit our restored Rural

School in River Park. Open by appt. Call the Chamber (641) 444-3937.

Crown Point Park – 204 5th Ave. NW. Located in west Belmond, "up on the hill". The park is slightly larger than a square city block and provides for mainly active recreation. The park has play equipment, shelter and tables. A large area allows for baseball or softball games with a back stop but also doubles as a small soccer field with net goals.

El-Mar Park – Access to the park is gained between 104-204 Sunset Drive and 1016-1020 3rd St. NE. A neighborhood park, it is tucked away in the middle of a block in the Kirkendall Addition. A few pieces of small play equipment are set up in this park. The park is large enough to play catch or have a ball game with young children.

CLARION

Monsanto Pollinator Park – Located one block north of Highway 3 and west of 4th St. NW, the park (sometimes known as a butterfly garden) is one acre of flowers to attract pollinators. A graveled path encircles the area; complete with benches for walkers to enjoy.

Gazebo Park – Located in the 200 block of West Central Ave., the park has a restored gazebo and water fountain, playground equipment, picnic tables, public restroom and basketball court. Gazebo Park is the sight of Clarion's annual Festival in the Park, the second weekend in June.

Hanson Park – Located in the 200 block of 6th Ave.

NE, it is home to two large baseball/softball diamonds. Little league and boys' high school games are played there in the summer.

Clarion Elementary/Middle School Play Area – Located in the 300 block of 3rd Ave. NE and east of the school buildings, is home to safe playground equipment for school children and the public's use. In the northeast corner of the school property is a lighted ball diamond, home of the C-G-D Cowgirls' home softball games and two tennis courts. East of the area is the Cowboys' covered football stadium, football field and six-lane, all-season sports track.

Aquatic Center Park – Located between 3rd Ave. NE,

5th Ave. NE and 6th St. NE, offers a shelter house, picnic tables, grills, playground equipment, basketball court and public restrooms. This park is adjacent to the new aquatic center and the school's 400-meter indoor/outdoor track.

Lion's Park – Located at 5th St. SE, includes children's play equipment and two lighted softball/baseball diamonds for evening play; new modern restrooms and concession stand ready for use.

Firemen's Park – Located between 4th and 5th Streets SW and bounded by 1st Ave. SW on the east, is home of the skate park. There are picnic tables and playground equipment for use by park-goers.



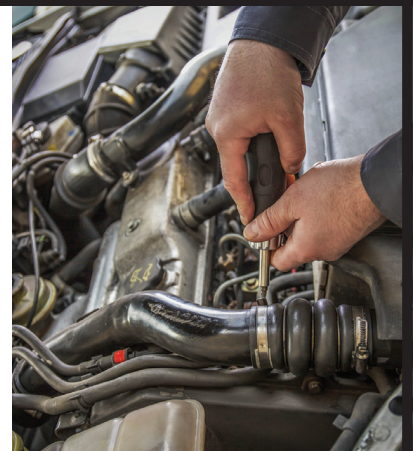
413 E Hwy 3 • Goldfield, IA 50542

"NO JOB TO SMALL WE FIX IT ALL"

**Specializing in
Diesel Truck
and
Trailer
Repair**

Hours

Mon. - Fri.
8a.m. to 6p.m.
Saturday
9a.m. to noon



DOWS

Dows City Park – This large, beautiful downtown park located on West Ellsworth, is the center of Dows' Annual Corn Days the first weekend each August. The large gazebo shelter is the focal point of the park. It also has playground equipment, picnic tables, water, and electricity.

Dows Pool Park – Located adjacent to the Dows Swimming Pool, the park includes an 11-space campground, shelter house, restrooms, running water and picnic tables.

Dows Historical District – A lovely, shaded area with picnic tables one block north of Dows Community Center. Restrooms and water available at the Welcome Center.

EAGLE GROVE

Greenwood Park (*Adjacent to the Wright County Fairgrounds*) – One of the most used parks in the county is located on a 31-acre campus in east Eagle Grove. It houses the newer Family Aquatic Center, skateboard park, four softball/baseball diamonds, the Wright County Fairgrounds, two basketball hoops, playground equipment, grills, restrooms, shelters and camper facilities.

Hewett Park – Located in the middle of town in the 600 block of SW 2nd St., has two newly-remodeled tennis courts, four basketball hoops, playground equipment, restrooms, shelter and grills.

Parkview Park – Located on Parkview Drive in southeast Eagle Grove, has four basketball hoops, playground equipment and a small picnic shelter.

Fishpond Park – Located in a beautiful area in northeast Eagle Grove, its main attraction

is a fishing hole, which used to be the town's swimming pool. The park also has playground equipment, basketball court and two shelters.

Flowing Well Park – Located on the corner of SW 2nd St. and Cedar Avenue, is a very unique park, consisting of a small gazebo with a flowing well inside of it. A great stop for a fresh well-water to drink.

Veterans Memorial Park – Located in the 200 block of W Broadway, was constructed in 2000 with donated funds and sponsored by the Eagle Grove Chamber of Commerce. This park offers a scenic display of flowers, shrubs and vegetation in the central business district. It hosts a variety of community events.

GOLDFIELD

Down Memory Lane – It is one of Goldfield's newer parks, located on the west side of North Main on Mill Street. It is an opportunity for a nature walk, has benches, and several picnic tables.

Old School Park – Located on the east side of North Main, is a hub of activity during the summer months. Amenities include two shelter houses, ball/tennis courts, restrooms, picnic tables and water/electricity. The community continues to add to, and replace, the playground equipment, which adds more potential fun for those choosing to use the park facility.

River Park – Located in northwest Goldfield on Cedar Street, the park parallels the Boone River. Major changes have been made as part of its Park Dam Improvement Project, making the river navigable for many miles. With the help



LAKE CORNELIA FUN!

of grants and contributions, the river rapids allows water rafting and tubing; newly installed canoe access areas, a new shelter house, new picnic tables and benches enhance the usability of the park. Fishing enthusiasts test their skills in the park; lots of wide open spaces for people to enjoy.

ROWAN

Playground Park – Located at the corner of Bingham and Main Street across the street from the city complex, has a large variety of playground

equipment in a newer setting. Landscaping is continually being upgraded.

WOOLSTOCK

Woolstock City Park – Located near the Community Hall, has picnic tables, benches and playground equipment.

Woolstock Athletic Park – Located east on Herman Street, has ball diamonds, tennis courts, a shelter and restrooms. Call (515) 839-5540 to learn more about using the parks for special occasions.

meeting places

BELMOND

Belmond Drive In – 215 River Ave. S, (641) 444-7063; Joe and Jewell McFarland (owners); dining room. Heat/AC. Menu options available. \$50 for 2 hours; no charge for food ordered off the menu.

Belmond-Klemme Schools – Jr.-Sr. High School at 411 10th Ave. NE and Jacobson Elementary at 1004 7th St. NE, (641) 444-4300 2221; Judy Aldridge, School Secretary. For the first two hours: Elementary gym \$100; Elementary Kitchen \$100; Elementary Cafeteria \$100; High School gym \$100; High School Auditorium \$100; High School Student Center \$100; High School Kitchen \$100; Track/Football field \$100; Baseball or Softball Field \$100. Each additional hour is \$10. Custodial Charges are \$20 an hour. Call for rates on use of equipment or labor costs for specifically trained employees.

Cattleman's at the Club – 1608 3rd St. NE, (641) 444-4183; DuWayne or Deb Abel (owners); Upper Level: Dining room – 120; Lounge – 50. Heat/AC; full service provided. Handicapped accessible building/restrooms. Sunday liquor sales. Closed Thanksgiving, Christmas Eve/Day, and New Year's Day. Lower Level: Available for rental for private parties, dining for 100; lounge area for up to 50. Either/both levels available for private parties, receptions. Charges vary with group needs. Deposits, if any, would vary by group.

Community Room/City Hall – 112 2nd Ave. NE, (641) 444-3386; Cheryl Gardner; up to 60 persons in auditorium style, 6 to 8-foot tables available. Heat, A/C; men's/women's restrooms down the hall. No cooking facilities; renter is responsible for cleaning room (vacuum provided). No smoking on property. Profit groups - \$75 rental fee if serving food/beverages; \$50 refundable deposit. Non-profit group/groups not serving food/beverages - \$20 suggested donation; \$50 refundable deposit.

Jenison-Meacham Memorial Art Center/Farm – 1179 Taylor Ave. Belmond Area Arts Council, contact Sue Nelson, (515) 571-3595. Capacity: 100 (museum); 100 (barn). Heat/AC; two restrooms; kitchen; piano. Upstairs/down-

stairs museum, available for meetings; barn also available. No smoking in barn/museum. Call for rate information.

Jerry's Place – 212 River Ave. S, (641) 444-3008; Kay Barkema (owner); seating for up to 100 people. Heat/AC; men's/women's restrooms; lounge area; smoking in patio area. Charges vary. Menu options available, depending on the size of the group.

Leinbach Center – 116 Luick's Lane N, (641) 444-3066; www.belapts.com. Jo Ann Huedepohl, manager. Seats 110. Heat/AC; fully equipped kitchen; men's/women's restrooms; handicapped accessible. Speaker systems; T.V. with DVD capabilities. No smoking and no alcohol. Busy center, make reservations as far in advance as possible. Freewill offering, suggested \$75; no deposit.

Talbot Belmond Public Library – 440 E Main St., (641) 444-4160; Chris Adcock, Library Director; seats 24 at tables – more if tables are taken down. Heat/AC; one men's/one women's restroom; kitchenette w/sink, refrigerator, microwave, 30 cup coffee pot. No alcohol. Only light refreshments permitted; May not be used for large receptions and children's birthday parties. Rental varies from \$10 - \$30, call for details/exact charges. No deposits; users responsible for damages to room/equipment. Reserve ahead of time with director; room agreement signed & fee paid prior to room use. If room used after library hours, pick up key during regular library hours.

VFW Hall – 240 E Main St., (641) 444-4698, Mary Watermillier. Heat/AC, men's and women's restrooms, handicap accessible. Kitchen facilities available. Responsible for clean up and trash removal. No alcohol. \$50 rental fee, \$50 deposit returned if left in clean condition. Seating for 100 people.

CLARION

Boulders Inn & Suites – 500 W Central Ave., (515) 602-6634. Manager – Cheryl Balderas. Seating capacity in lobby area for up to 40. Heat/AC. Two restrooms; one public handicapped

accessible. Coffee and microwave available. Charges negotiated at time of reservation (not available before 11 a.m.). Closed door meeting room now available. Seats 8 comfortably. Coffee and water provided. Microwave and refrigerator in room. Available from 8:30 am-8:30 pm - \$50.

Chappy's on Main – 122 S Main, (515) 532-2727; Nick Barrett, owner/operator. Seating Capacity – party room – up to 100. Heat/AC; two restrooms. Handicapped accessible. No charges; no deposits with food/beverage order.

Clarion Chamber & Development Office (Rock Island Depot) – 302 S Main, (515) 532-2256. Contact Director. Seating capacity – 10 around large conference table; 40 theater seating. Heat/AC, restrooms, coffee pot, small refrigerator, microwave. Limited numbers of tables and chairs. Handicapped accessible; no smoking. \$50 per day charge; no deposit needed; no charge for chamber/development members.

Clarion Public Library – 302 N Main (515) 532-3673; Linda Lloyd, Director. Two meeting rooms; one smaller/one large with capacity – up to 85 at tables; 100-plus in stadium seating. Heat/AC; handicapped accessible. Stove, refrigerator, microwave in kitchenette. No alcohol. Available year round; \$50 deposit; \$30 rental - large room; \$20 rental – smaller room.

Clarion-Goldfield-Dows Schools – 120 Central Ave. E, (515) 532-3423; Superintendent's Office. High school: gym, seats 1,125, \$50; cafetorium, \$35; kitchen, \$30; kitchen and cafetorium, \$50; kitchen, cafetorium and gym, \$70. Elementary/middle school: gym, seats up to 400, \$30; multi-purpose room, \$30; kitchen & gym/multi-purpose, \$50. Fees for using school staff. Not available for private receptions. For more complete information, contact the above office.

grounded – 118 N Main, (515) 602-6212; Contact person, Maggie Solis or Danny Solis. grounded capacity: 50 persons (handicapped accessible); undergrounded: 50 persons (basement, not handicapped accessible). Heat/AC, three

DOWS

restrooms. Beer and wine available. No rental fees charged with food orders. Business hours which are 7 a.m.-2 p.m. Monday-Friday; available for parties/groups after hours by reservation.

Hardee's – 329 Central Ave. W, (515) 532-2442, General Manager/staff. Two party rooms: seating up to 18 (south-west room), 20 (southeast room); Heat/AC, two restrooms; handicapped accessible. Open every day of the year except Thanksgiving and Christmas. No charge for facility, food/drink purchase preferred. Larger groups, please reserve 24 hours ahead of use.

Heartland Museum – Highway 3 and 9th Street SW, (515) 602-6000; www.heartlandmuseum.org. Seating capacity is up to 300 people. Heat/AC, restrooms, kitchen, PA system, overhead screen and projector, tables and chairs. Handicap accessible ramp. Call for current rates and refundable deposit.

Pizza Ranch – 102 S Main, (515) 532-3215; Lorrie Allen, Operating Partner. Two community rooms: Back 50 (larger) seating for 50; (smaller) seating for 25-30 people. Heat/AC, two restrooms, handicapped accessible. No alcohol. Open every day except Thanksgiving and Christmas. No charges for facility use with food order.

The Red Shed Event Center – 908 2nd St. NW. Steve and Julie Dunker (owners) (515) 851-0797. Seating capacity up to 300. Heat/AC, restrooms, tables and chairs included in rental fee; handicapped accessible. No smoking. Full bar with liquor license; no outside liquor allowed. Rental fee based on the type of event; number of people. Outside patio space; ceremony area for weddings. Refundable security deposit required.

VFW Hall – 211 6th St. SW. Dennis Mraz, (515) 851-8956 or Doug Riley, (515) 851-1475. Seating capacity: up to 100 at tables; larger numbers for stadium seating. Heat/AC, two restrooms, two stoves, refrigerator, fully equipped, large kitchen. Handicapped accessible. No alcohol permitted. \$50 rental charge; no deposit required.

American Legion Hall – 120 E Ellsworth, (515) 852-3576. Contact person, Bill Chambers, (515) 852-4773. Seating capacity up to 90 persons. Heat/AC, two restrooms, handicapped accessible. Full, well-equipped kitchen. Year round rental. No alcohol permitted. Rental fee is \$75 for reunions, receptions. Smaller groups – fees can be negotiated.

Crème de la Crème – 122 E Ellsworth, (515) 852-3533, Cindy Denger contact (in Dows Mercantile building). Open from 10 a.m.-5 p.m. Monday-Saturday and 12-5 p.m. Sunday. Comfortable seating for up to 30. Heat/AC, restrooms, handicapped accessible. No room rental fees with food orders. Other hours can be arranged by appointment.

Down Home Restaurant – 104 E Ellsworth, (515) 852-3627, Rick Davis, Owner/Operator, party room seats up to 75. Heat/AC, two restrooms, handicapped accessible. No deposits; no room rentals with food orders.

Dows Convention Center – 119 E Ellsworth, (515) 852-4327. Jeanette Wenzel, City Clerk. Seating capacity up to 300. Heat/AC, two restrooms, kitchen facilities, handicap accessible; cordless microphone. Center has their own liquor license so all liquor must be purchased through the convention center. No smoking in the building. \$100 for 1-75 people; \$300 for over 100 people. Deposit is equal to rental rate.

Dows Senior Citizens Center – 102 W Ellsworth, (515) 852-4282, Elizabeth Olson. Seating capacity up to 75 at tables; 100 in stadium seating. Heat/AC, three restrooms, complete kitchen facilities includes two stoves, two refrigerators. Microphone; piano. handicapped accessible. Alcohol permitted. Charges \$50, with \$15 rebate if left clean.

EAGLE GROVE

Eagle Grove Chamber of Commerce/Development Commission – 212 W Broadway, (515) 448-4821. Contact Chamber Director. Heat/AC; two restrooms, no kitchen facilities. No charge for chamber members; \$30 non-chamber members.

Eagle Grove Community Schools – 325 N Commercial Ave., (515) 448-4749, Superintendent's Office. Available for rent: middle school auditorium; Room #103, Emerson Building; all three gyms; kitchen (cook must be on duty). File a letter with the superintendent's office. Non-profits, no charge.

Eagle Grove Golf Course – 1127 270th St., (515) 448-4166. Seating capacity of up to 100 – tables of four for banquet style seating/serving. Heat, A/C, two restrooms on main floor; two on lower level; handicapped accessible. Podium. Room rental - \$200, plus food/alcohol charges.

Eagle Grove Memorial Hall – 200 S Park, (515) 448-5133; (515) 448-4343 – city hall. Contact persons: city clerks, Araceli Day and Sue Maier. Seating capacity, 200; Heat/AC; two restrooms, kitchen facilities, handicap accessible. Alcohol permitted. Rent, when serving alcohol, \$250. Groups 50 and under, \$75; over 50, \$175. Deposits, \$100; \$500 with alcohol. Small room rental, \$20, no kitchen use.

Eagle Grove Memorial Library – 101 S Caldwell, (515) 448-4115, Jan Grandgeorge, manager. Seating capacity: 50. Heat/AC; restrooms, handicapped accessibility; limited kitchen facilities. No alcohol. No charge/no deposit.

Eagle Grove Historical Museum – 410 W Broadway, (515) 293-1427 contact Ron Mohr for rental information.

Family Table Restaurant – 618 S Commercial Ave., (515) 448-4321, Contact Nick Kestel. Capacity: 44 people. Heat/AC; two restrooms, handicap accessible. Beer/wine coolers served. No charges for rental with food orders.

Masonic Temple – Highway 17 S, (515) 448-3616; Dennis Stoll, (515) 603-5004; Del Kramersmeier, (515) 448-3719. Capacity: 150 persons. Heat/AC; two restrooms; kitchen facilities, handicap accessible. No alcohol.

Rails – 220 Railroad Ave., (515) 603-6999. Seated meeting style capacity is 100. Rental fee is determined by service. Bar service available. Heat/AC, handicap accessible. Banquet Center capacity: 200,

meeting places

heat/AC. Restrooms are handicapped accessible. Kitchen: food and beverages served, or catered. Fee to be determined.

VFW building – 119 W Broadway, no phone. Contact person Paul Thompson – (515) 448-4218. Bring own alcohol. \$75 per day rental; \$40 - ½ day, 4 hours or less; no deposit. No charges if rented for fundraiser to improve Eagle Grove.

Wright County Fairgrounds – Call the fair office for availability, (515) 448-3351; Commercial Building #1 for family reunions, graduations, garage sales, company picnics. Has tables and chairs; no heat or air conditioning. New bathrooms adjacent to the building can be rented with the building.

GOLDFIELD

Goldfield American Legion Hall – 509 N Main St., (515) 825-3360. Contact Brad (or Tracy) Crees, commander, (515) 293-0955; Cindy Sampson, site manager

(515) 825-3533. Size/seating capacity between 48-60. Heat/AC; two restrooms. Kitchen facilities; handicapped accessible. No alcohol. Available anytime of the year. Rental, \$35; no deposit.

Crossroads Ministry – 520 N Main, (515) 825-3383 or (515) 293-2767, Craig Carlson, Director. Seating Capacity – 35. Heat/AC, one restroom, kitchen facilities and handicap accessible. No alcohol permitted. Open year round. No charge for churches/church related events/activities, rental fee for others, \$45.

Goldfield School – 300 N School St., (515) 825-3613 call Goldfield City Hall. Now used as a community center. Kitchen, \$10/hour; max. event, \$30; multi-purpose room, \$10/hour, max event, \$30; gym, \$15/hour, max event, \$45; kitchen/MPR, \$15/hour, max event, \$45; MPR/gym, \$20/hour, max event, \$60; MPR/kitchen/gym, \$25/hour, max event, \$75. Rent, cleaning, and key deposit. Key

required to reserve building. More complete information available at city hall.

Oakridge Golf Course, Davanna's at Oakridge – 2119 Oakridge Road, (515) 825-3611; cell phone (515) 341-0604. Contact person, Davanna Fedkenheuer, club house/restaurant manager. Seating size – up to 100. Heat, A/C, men's/women's restrooms. Catering available. Clubhouse available all year. Use of facility free with food/drink orders.

LAKE CORNELIA

Clarmond Country Club – 1776 Page Ave., Clarion, (515) 532-2911. Various sized-rooms available with maximum capacity of 300. Heat/AC; men's and women's restrooms. Non-smoking facility; alcohol available by club management only. Charges vary by size of party, for information contact clubhouse. Deposits. \$100 and up. Seasonal availability for use by members/non-members.





Eagle Grove Eagle • www.theeaglegroveeagle.com
448-4745 • 314 W. Broadway, Eagle Grove, IA

Hometown News.

Genuine Readers.

Lake Cornelia Park – Enclosed shelter, 1768 O'Brien Ave., Clarion, (515) 532-3185, Wright County Board/Staff. Seating capacity: up to 100. Heat/AC, men/women's restroom, handicap accessible. No hard alcohol, wine/beer okay. Available all year. Rent, \$90 per day.

ROWAN

Iowa River Players Theatre – 901 Broadway, contact person LuAnn Krabbe, (641) 444-4220, lkrabbe@gmail.com. Seating capacity in the theatre up to nearly 200. Heat/AC; men's/women's restrooms, handicapped accessible. Seasonally available. Rental/contracts are negotiated by IRP board.

Rowan Community Center – 101 Main St., (641) 853-2345, City Hall, city-of-rowan@gmail.com; www.cityofrowan.com. New facility with beautiful tables and chairs; equipped kitchen includes refrigerator and microwave oven. Heat/

AC, men's/women's restrooms, handicap accessible. No alcohol. Rent \$50 per day; \$100 refundable deposit; non-profit clubs/organizations – not charged, but donations appreciated

Rowan Events Center – 931 Broadway, (641) 853-2345, City Hall, cityof-rowan@gmail.com, www.cityofrowan.com. Fully equipped kitchen. Heat/AC, men's/women's restrooms, in process of being made handicapped accessible. Rent \$75 per day; \$250 refundable deposit.

WOOLSTOCK

Woolstock City Hall – 101 Mission St., (515) 839-5540. City clerk, Pam Gearhart, (515) 835-2566. Tables/chairs available; small kitchenette with stove/refrigerator; one unisex bathroom; handicap accessible. Seats up to 50. No alcohol. Rental, \$50; with deposit of \$25.

Woolstock Community Hall – Corner of Herman and McArthur Streets,

(515) 839-5540. Tables/chairs available. full kitchen with nice working/serving counter. Small stage. Alcohol permitted with some restrictions. Heat, A/C, men's/women's restrooms; handicapped accessible. Rent \$100, with \$50 deposit.

Every community has church buildings available with rooms, which can be used with varying requirements/restrictions. Contact Belmond Chamber (641) 444-3937; Clarion Chamber and Development, (515) 532-2256; Eagle Grove Chamber, (515) 448-4821; Goldfield City Hall, (515) 825-3613; Dows City Hall, (515) 582-4327; Rowan City Hall, (641) 853-2345 or Woolstock City Hall, (515) 839-5540, for more complete church information/details.

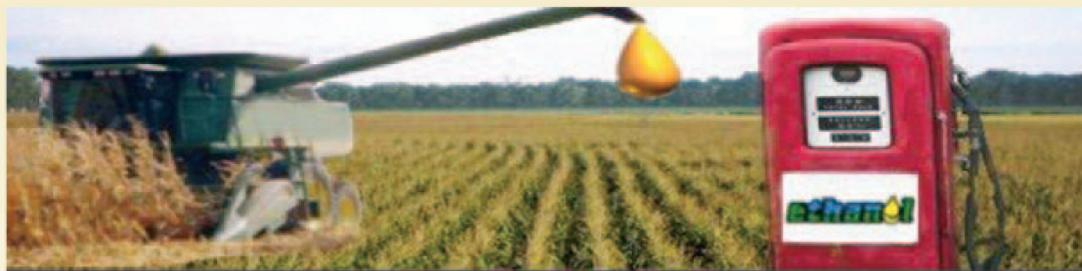
This listing is meant for information purposes; individual listings may not be complete and may be subject to change. Rental agreements are between the particular listing and the prospective renting party.

ENJOY Wright County!

First Citizens Bank
is Wright County's Financial Partner...
strengthening communities and customer relationships!

FIRST CITIZENS BANK
315 Central Ave E • Clarion
515-532-2841 • www.myfcb.bank

First Citizens Bank
EQUAL HOUSING LENDER
Member FDIC



CORN, LP

We're Geared For The Future - Feeding & Fueling America



Our Mission: To successfully add value to locally grown grains which will profit our investor owners and area grain and livestock producers while benefiting our local communities through economic growth.

CORN, LP

P.O. Box 280 • 1303 Hwy 3 East
Goldfield, IA 50542

Phone: 866-838-0683 • Fax: 515-825-3905
www.cornlp.com

Since 1983 we have been guiding our cooperative to a Golden Future!

- Grain Facilities & Services
- Feed Mill Facilities & Services
- Agronomy Products & Services
- GPS Technology

**Locations in Goldfield, Eagle Grove,
Renwick, Corwith, Wesley, Titonka,
Thor, Hardy & Livermore**

**Our Gold-Eagle families welcome
you to Wright County**

GOLD-EAGLE COOPERATIVE

415 N. Locust St. • Goldfield, IA 50542
515-825-3161 • www.goldeaglecoop.com



BELMOND

**Belmond Area
Chamber of Commerce**
223 E Main St.
Belmond, IA 50421
(641) 444-3937
www.belmondiowa.com

Belmond City Hall
112 2nd Ave. NE
Belmond, IA 50421
(641) 444-3386
www.belmondiowa.com

**Belmond
Historical Museum**
223 E Main St.
Belmond, IA 50421
www.belmondmuseum.com
belmondhistory@gmail.com

**Jenison-Meacham Memorial
Art Center & Museum**
1179 Taylor Ave.
Belmond, IA 50421
(641) 444-4635
www.belmondartscenter.org

**Belmond
Public Library**
440 E Main St.
Belmond, IA 50421
(641) 444-4160
[www.youseemore.com/NILC/
Belmond/directory.asp](http://www.youseemore.com/NILC/Belmond/directory.asp)

CLARION

Clarion City Hall
121 1st St. SW
Clarion, IA 50525
(515) 532-2847
www.clarioniowa.com

**Clarion Chamber and
Development**
302 S Main St., P.O. Box 6
Clarion, IA 50525
(515) 532-2256
www.clarioniowa.com

Clarion Public Library
302 N Main St.
Clarion, IA 50525
(515) 532-3673
www.clarion.lib.ia.us

Heartland Museum
119 9th St. SW
Clarion, IA 50525
(515) 602-6000
www.heartlandmuseum.org

DOWS

City of Dows
119 E Ellsworth
Dows, IA 50071
(515) 852-4327

**Dows Historical District
Depot Welcome Center**
100 W Train St.
Dows, IA 50071
(515) 852-3595

Dows Public Library
114 W. Ellsworth
Dows, IA 50071
(515) 852-4326
www.dows.lib.ia.us

EAGLE GROVE

City of Eagle Grove
210 E Broadway
Eagle Grove, IA 50533
(515) 448-4343
www.eaglegroveiowa.org

**Eagle Grove Area
Chamber of Commerce**
212 W Broadway
Eagle Grove, IA 50533
(515) 448-4821
www.eaglegrove.com
**Eagle Grove
Memorial Library**
101 S Cadwell
Eagle Grove, IA 50533
(515) 448-4115
[www.youseemore.com/nilc/
eaglegrove](http://www.youseemore.com/nilc/eaglegrove)

GOLDFIELD

City of Goldfield
423 N Main
P.O. Box 27
Goldfield, IA 50542
(515) 825-3613
www.goldfieldia.org

Goldfield Commercial Club
Ken Stoakes, Treasurer
Goldfield, IA 50542
516 Water Street
(515) 825-3339

ROWAN

City of Rowan
101 Main St., P.O. Box 182
Rowan, IA 50470
(641) 853-2345
www.rowaniowa.info
cityofrowan@yahoo.com

Iowa River Players' Theatre
901 Broadway
P.O. Box 22
Rowan, IA 50470
[www.iowariverplayerstheater.
org](http://www.iowariverplayerstheater.org)

Rowan Public Library
101 Main St., P.O. Box 202
Rowan, IA 50471
(641) 853-2327
[www.youseemore.com/NILC/
RowanPL](http://www.youseemore.com/NILC/RowanPL)

WOOLSTOCK

City of Woolstock
101 Mission St.
Woolstock, IA 50599
(515) 839-5540

WRIGHT COUNTY

**Wright County
Conservation Board**
1768 O'Brien Ave.
Clarion, IA 50525
(515) 532-3185
www.wrightcounty.org
wccb@co.wright.ia.us

**Wright County
District Junior Fair**
901 SE 1st St.
Eagle Grove, IA 50533
(515) 448-3351
www.wrightcofair.com

**Wright County Economic
Development Office**
115 N Main St.
P.O. Box 214
Clarion, IA 50525
(515) 532-6422
www.wrightcounty.org

**Wright County ISU
Extension Office**
210 1st St. SW
Clarion, IA 50525
(515) 532-3453
[www.extension.iastate.edu/
wright/](http://www.extension.iastate.edu/wright/)



David Stanton
Financial Advisor

108 Central Ave East
Clarion, IA 50525
515-532-2568

Edward Jones
MAKING SENSE OF INVESTING

POLICE OR AMBULANCE

**CALL 911 or
Belmond**
(641) 444-3822

Belmond Non-Emergency
(877) 442-3357

Clarion
(515) 532-3831
(515) 532-6980

Clarion Non-Emergency
(515) 532-2515
(515) 532-2848 (fire)

Dows Non-Emergency
(515) 852-4327

**Eagle Grove
Non-Emergency**
Fire: (515) 448-4793
Ambulance: (515) 448-4686

**Goldfield
Non-Emergency**
(515) 825-3300

Wright County Sheriff
(515) 532-3722

HOSPITALS & CLINICS

Iowa Specialty Hospital, Belmond
403 1st St. SE
Belmond, IA 50421
(641) 444-3223 or 844-474-4321
www.iowaspecialtyhospital.com

Iowa Specialty Hospital, Clarion
1316 S Main St.
Clarion, IA 50525
(515) 532-2811 or
(844) 474-4321
www.iowaspecialtyhospital.com

Dows Clinic
103 E Ellsworth St.
Dows, IA 50071
(515) 852-4113

Clarion Clinic
215 13th Ave. SW
Clarion, IA 50525
(515) 532-2836 or (844) 474-4321
www.iowaspecialtyhospital.com

Unity Point Clinic
115 S Park Ave.
Eagle Grove, IA 50533
(515) 448-5185

Eagle Grove Wellness Center
801 SE 5th St.
Eagle Grove, IA 50533
(515) 448-9886

CHIROPRACTORS

Arnold Family Chiropractic
423 E Main St.
Belmond, IA 50421
(641) 444-3299

Cramer Chiropractic
1123 Central Ave. E
Clarion, IA 50525
(515) 532-0104
www.cramerchiro.com

Eagle Grove Chiropractic
318 W Broadway
Eagle Grove, IA 50533
(515) 448-3387
www.eaglegrovechiropractic.com

P. A. Parks
113 1st Ave. NE
Belmond, IA 50421
(641) 444-3901

Wright Choice Chiropractic
920 E Central Ave.
Clarion, IA 50525
(515) 532-3425
www.mywrightchoice.com

LOCKSMITH SERVICE

Larry Lohse
Belmond, IA 50421
(641) 444-4015
(515) 571-6672

Maximum Overdrive
Dows, IA 50071
(515) 729-8154

Mobile Locksmith Service
Clarion, IA 50525
Shayne Hennigar
(515) 851-0019

TOWING & WRECKERS

Hennigar Towing
Clarion, IA 50525
(515) 293-0048

**Maximum Overdrive
Wrecker & Towing**
Dows, IA 50071
(515) 729-8154

Lyle's Ford - AAA
Eagle Grove, IA 50533
(515) 448-5171

SSB MotoSports
Woolstock, IA 50599
(515) 835-1138

AIRPORTS

Belmond Airport
(641) 444-3386

Clarion Airport
(515) 532-6980
(515) 851-0526

Eagle Grove Airport
(515) 448-4343



BELMOND

Belmond Drive In

215 River Ave. S
(641) 444-4422

Casa Chamelon (seasonal)

439 E Main
(641) 444-4386

Casey's

303 River Ave. S
(641) 444-4290

Cattleman's at The Club

1608 3rd St. NE
(641) 444-4183

Jerry's Place

212 River Ave. S
(641) 444-3008

Nuevo Leon

203 River Ave. S
(641) 444-4405

Spare Time

Lanes & Lounge
203 2nd Ave. SE
(641) 444-4141

Subway

112 River Ave.
(641) 444-3829

Sugar Pie Bakery

319 E Main
(641) 444-3466

The Corner

Restaurant & Lounge
207 E Main St.
(641) 444-4451

The Oasis

At Iowa Specialty Hospital
403 1st St. SE
(641) 444-5682

CLARION

Carmen's Super Market & Restaurant

1218 E Central Ave.
(515) 532-2787

Casey's

22 Central Ave. W
(515) 532-3030

Chappy's On Main

122 S Main St.
(515) 532-2727

Clarion Super Foods - Deli & Catering

325 Central Ave. W
(515) 532-2829

Fuel

223 N Main
(515) 532-3835

grounded

118 N Main
(515) 602-6212

Hardee's

329 Central Ave. W
(515) 532-2442

La Tienda Mexicana lunch counter

116 S Main
(515) 532-2222

New Home Cafe

106 S Main St.
(515) 602-6386

Pizza Ranch

102 S Main
(515) 532-3215

Sam's Chinese Kitchen

104 Central Ave. E
(515) 532-2989

Snack Village

1006 Central Ave. W
(515) 532-2558

Subway

316 Central Ave. W
(515) 532-6917

Wildflower Cafe

At Iowa Specialty Hospital
1316 S Main
(515) 532-2811

DOWS

Casey's

2721 Dows-Williams Rd.
(515) 852-3503

Crème de la Crème

Mercantile Building
122 E Ellsworth
(515) 825-3533

DownHome Restaurant

104 E Ellsworth
(515) 852-3627

Oscar's Bar

119 E Ellsworth

The River Bar

108 E Ellsworth
(515) 852-4255

EAGLE GROVE

Ampride

215 N Commercial
(515)-603-6412

B&S Crossing

316 W Broadway
(515) 448-5072

Casey's

200 S Commercial Ave.
(515) 448-3022

Eagle Bowl

305 NW 11th
(515) 448-3221

Lewright's Deli

317 W Broadway
(515) 448-3300

Rails Bar & Grill

220 Railroad Ave.
(515) 603 -6999

Sam's Chinese Restaurant

206 W Broadway
(515) 448-9988

Subway

300 N Commercial Ave.
(515) 603-6200

Taqueria El Cacheton

309 W Broadway
(515) 448-9072

The Farm

322 W Broadway
(515)-851-9718

The Smoke Shop

110 W Broadway
(515) 448 4381

Twins Shoppe

301 N Commercial
(515) 448-4413

The Family Table

618 S Commercial
(515) 448-4321

GOLDFIELD

Casey's

319 E Highway 3
(515) 825-3470

Davanna's at Oakridge

2119 Oakridge St.
(515) 341-0604

Goldfield Cheese Mart

200 W Highway 3
(515) 825-3450

The Well

Bar, frozen pizza
533 N Main
(515) 825-3839

CATERING

Jessica's

Country Kitchen

1646 270th St., Eagle Grove
(515) 448-3956
(515) 851-0718 - cell

Wholly

Smoke BBQ

544 100th St., Dows
Rob Dietz, Pit Boss
(319) 239-6290





ABUNDANT LIFE

Abundant Life Chapel
207 Fairview St., Dows
Pastor's Office - (515) 852-4528
Secretary - (515) 852-4520

ASSEMBLIES OF GOD

Dayspring Assembly of God
208 6th Ave. SW, Belmond
(641) 444-3088

BAPTIST

Calvary Baptist
516 E Main St., Belmond
(641) 444-4144
First Baptist
1210 S Commercial, Eagle Grove
(515) 448-4612
Holmes Baptist
2137 Hancock Ave., Holmes
(515) 825-3110

CATHOLIC

Sacred Heart Catholic
221 S Jackson Ave., Eagle Grove
(515) 532-3586
St. Francis Xavier
1207 3rd St. NE, Belmond
(515) 532-3586
St. John's Catholic
608 2nd Ave. NE, Clarion
(515) 532-3586

CHURCH OF CHRIST

Church Of Christ
420 N Main St., Clarion
(515) 532-3273

EVANGELICAL FREE

Evangelical Free
2796 130th Drive, Belmond
(641) 444-3204
Grace Evangelical Free
1220 S Commercial Ave., Eagle Grove
(515) 448-5414

HISPANIC

Bienvenidos Iglesia Cristiane Nueva Fida
522 S Main St., Clarion
(515) 851-2613
Centro Cristiano Vida Nueva
208 1st St. SE, Belmond
(641) 444-4662
Gloria a Cresto
114 S Main St., Clarion
(515) 851-2153
(515) 851-1729
Iglesia Principe de Paz
115 1st Ave. NW, Clarion
The Living God
107 E Ellsworth, Dows
(641) 373-7121
Winds Of Fire Church
415 NE 2nd St., Eagle Grove
(515) 603-6200

LUTHERAN

Eagle Grove Evangelical Lutheran
615 SW 2nd St., Eagle Grove
(515) 448-3697
First Lutheran
420 1st St. NW, Clarion
(515) 532-3440

First Lutheran
206 W Ellsworth, Dows
(515) 852-4283
Holmes Lutheran
2139 Hancock Ave., Holmes
(515) 825-3660
Immanuel Evangelical Lutheran
RR1, Clarion (N. on Highway 69)
(515) 532-2729
Lake Lutheran
3250 190th St., Goldfield
(515) 825-3610
Mount Calvary Evangelical
400 W Broadway, Eagle Grove
(515) 448-4668
New Hope Lutheran
1115 SW 2nd St., Eagle Grove
(515) 293-2965
Samuel Lutheran
201 N Lincoln, Eagle Grove
(515) 448-5038
St. Olaf Lutheran
2211 130th St., Belmond
Trinity Lutheran
304 3rd Ave. NE, Belmond
(641) 444-4149

NAZARENE

Lighthouse Church of the Nazarene
1010 2nd St. SW, Clarion
(515) 897-5611

NON-DENOMINATIONAL

Dwelling Place
1204 Central Ave. E, Clarion
(515) 293-2822
Sovereign Grace Church
109 N Eskridge St., Dows

Traveling in Wright County using the 911 road signs

Can you read the names of the street road signs to identify where you are in Wright County? You can if you know the "pattern."

All county street signs run east and west; the numbering begins at the north border of the county at 100th Street, moving by 10 for every mile south, to more than 300th Street in southern Wright County. Highway 3 could also be called 220th Street.

Avenues begin at the west border of the county and are alphabetical, beginning with A, moving east by the mile,

continuing with B, C and so on. Madison Avenue is more commonly known by residents as County K; Youngblood is almost in Franklin County.

Houses or building sites on streets begin their numbering at the west side of the County at 1000 and climb to 3000 on the east side of the county. Numbers for avenues reflect the distances between the streets. For example, 2475 Page Avenue would tell a 911 operator, or any other traveler, the needed location is $\frac{3}{4}$ mile (the '75') further south of 240th Street.



UNITED CHURCH OF CHRIST

United Church of Christ Congregational

116 W Main St., Belmond
(641) 444-3407

United Church of Christ Congregational

121 3rd Ave. NW, Clarion
(515) 532-2269

United Church of Rowan

811 Pesch St., Rowan
(Congregational & Methodist)
(515) 853-2264

PRESBYTERIAN

First Presbyterian

109 N Eskridge St., Dows
(515) 852-3330

United Presbyterian

219 1st St. NW, Clarion
(515) 532-2709

United Presbyterian

220 E Oak, Goldfield
(515) 825-3581

REFORMED

Immanuel Reformed

3157 130th St., Belmond
(641) 444-4318

Wright Christian Reformed

1730 130th St., Kanawha
(641) 762-3530

United Church of Christ

1115 SW 2nd St., Eagle Grove
(515) 448-3584

UNITED METHODIST

First United Methodist

201 3rd Ave. NE, Clarion
(515) 532-2845

Methodist

101 E Northrup St., Dows
(515) 852-3325

Morgan United Methodist

569 100th St., Dows
(515) 852-3394

United Church of Rowan

811 Pesch St., Rowan
Yoked Church (Methodist &
Congregational)
(515) 853-2264

United Methodist

1031 1st St. SE, Belmond
(641) 444-3491

United Methodist

421 W Broadway, Eagle Grove
(515) 448-4701

United Methodist

121 W Chestnut, Goldfield
(515) 825-3754

United Methodist

201 Cecilia St., Woolstock
(515) 839-5525

New Styles and Selection!

**THESE AREN'T
YOUR
GRANDMA'S
DIABETIC
SHOES**

EAGLE GROVE PHARMACY
Your Total Healthcare Specialists!

OUTREACHES

Crossroads Youth & Family Center

502 N Main St., Goldfield
(515) 293-2767

KJYL Christian radio (100.7 Fm)

Station office:
118 W Highway 3, Goldfield
(515) 825-3100

BACK IN THE DAY

Submitted by Melody Lager with Heartland Museum

Wright County was organized into a county government in 1855. Between that time and the early 1900's many small towns were established, some just as post office stops, others with the hope the railroad would come through. Many of those towns are now nothing but ghost towns. The towns that grew make our communities in Wright County to this day.

Goldfield was platted next to what was once known as Liberty, which was the first county seat in 1856. Since land and weather conditions made getting to Liberty difficult, the county seat was moved in 1865 to the exact center of the county – what is now highway 3 and 2nd Street (old county K). However, the marshy conditions there forced

the courthouse to move two blocks east in Clarion. Liberty originated in 1855. Liberty and Goldfield were made into one town, with the thought the town would be named “Brassfield” after the first settler, but it was thought “Goldfield” sounded better.

Belmond, located early on the west side of the Iowa River, was platted by Archibald Dumond and others in 1856 and was known as Crown Point. Belmond is a compiled name of Mr. Dumond's daughter, Belle, and “mond”.

Clarion was known as Grant and established in 1865. In 1870 the name was changed to Clarion as there was already another town named Grant in Iowa. Clarion's first building was a courthouse.

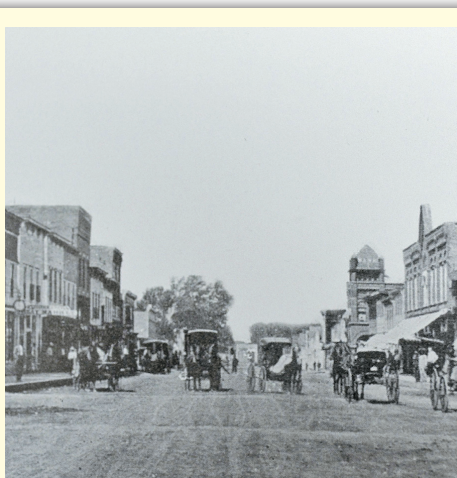
Dows was platted in 1880. Prior

to that, it was known as “Otisville”. It was changed to Dows in honor of Colonel Dow, a famous promoter of early-day railroads and a heavy stockholder in different railroads

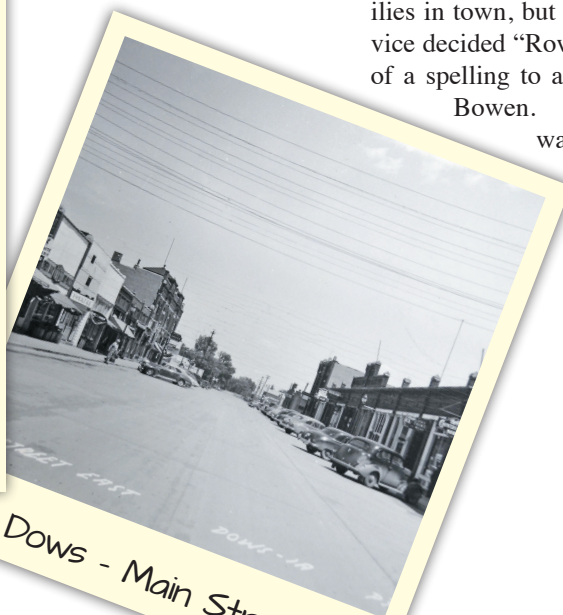
Woolstock was platted in 1881 by the Chicago & North Western Railway Company and was heavily settled by French immigrants. Galt, originally known as “Norwich” was established in 1881. In 1882, the US Post Office indicated the town must be Galtville, which they changed to Galt in 1888.

The following towns were established after the railways went through. Eagle Grove Junction, now known as Eagle Grove, was started in 1881. Rowan was platted in 1884. It is a little north and east of the original “Horse Grove” and north of the first post office in Wright County at “Fryeburg.” It was to be named “Rowen” after one of the first families in town, but the US Postal Service decided “Rowen” was too close of a spelling to another Iowa town, Bowen. Finally, Holmes was planted along the railroad in 1885.

Welcome to Wright County!



Belmond - Main Street



Dows - Main Street



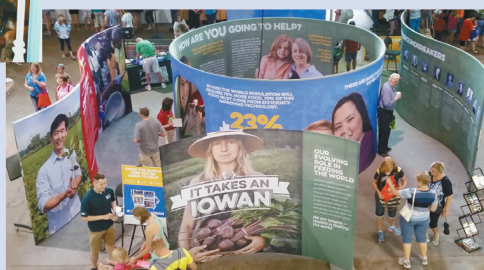
Discover Heartland Museum

Clarion, IA Highway 3 West • 515.602.6000 • www.heartlandmuseum.org



**Admission is \$12
for adults;
\$6 for children**

Home to Alvena Sellers' hat collection, 100's of antique tractors, buggies, and wagons as well as Big Bud - the world's largest farm tractor. Don't forget to visit the old time general store, check out our teddy bears, & more.



"It Takes an Iowan interactive exhibit included with admission during the month of June"

Preserving the Past for the Future

Open Memorial Weekend through Labor Day Weekend
Monday through Saturday - 10 a.m. - 3 p.m. - Tours by appointment.



Wright County, Birthplace of the 4-H Emblem

Submitted by Melody Lager from the Heartland Museum

Imagine over 6 million young people involved today in an organization that started out as clubs to keep young people on the farm. In 1902, boys' and girls' clubs started forming in the country schools, with the idea of promoting farming as a good life.

O.H. Benson was the Wright County Superintendent of county schools during this time. As the boys' and girls' clubs were forming, he is credited with the idea of the 4-H four-leaf clover emblem. One day when he stopped to visit Lake School #6 in Wright County, the children presented him with a bouquet of four-leaf clovers for good luck.

By the time he stood up to talk to those children, the four-leaf clovers had become an idea that he shared. Head, heart, hands

and health fit everything he believed the clubs stood for. The head to think, plan and reason; heart to be kind, true and sympathetic; hands to be useful, helpful and skillful; and health to resist disease and enjoy life.

The 4-H program has evolved over the years, and now encompasses a wide range of activities for children to focus on. While farming and farm life remain an important part of the choices, a child may also decide to learn about photography, dog obedience, horses, baking and more. The choices seem as endless as a child's imagination. 4-H'ers show their talents at a district fair, and the "best of the best" go on to be displayed at state fairs. In Iowa, ribbons and trophies are awarded for being at the fairs.

The original Lake Country School #6 now resides at the Heartland Museum complex in Clarion. In 1952 it moved from its original location to the Gazebo Park in Clarion. For years, 4-H children helped staff the museum to be open during the summer. In 2017, the city of Clarion agreed to let the schoolhouse be moved once again. It is now open during Heartland Museum's scheduled open hours (summer Monday-Saturday, 10 a.m.-3 p.m.) or by appointment. The schoolhouse displays a period of 1907-08, plus a treasure trove of 4-H memorabilia. Girls uniforms, record books, scrapbooks and more are displayed. Papers and letters from O.H. Benson are available. See the schoolhouse at 119 9th St. SW in Clarion as part of the Heartland Museum tour!

head • heart • hands • health



Steamers, Bathbombs



Jars & Vases & Tins



Wearables



Signs and Wall Decor



RUSTIC RAVEN HOME DECOR

602 North Main, Clarion
(515) 851-5206 • rusticravenhomedecor.com



• Women's Tops • Dresses • Sweatshirts • Tanks • Purses •

Jewelry • Shoes • Denim

italics
BOUTIQUE



118 South Main, Clarion



(641) 751-5337 • www.italicsboutique.com

Graphic Ts • Hats • NisSkin



121 1st Ave NE
515-532-2150
www.clarioniowarealty.com



121 1st Avenue NE
(515) 532-3943
www.heartsandflowersclarionia.com

LEAH
JEAN
BOUTIQUE



112 N Main St
(515) 532-3688



Da Vanna's at Oakridge



STEAKS, FISH, BURGERS & MORE
2119 OAKRIDGE ROAD • GOLDFIELD
(515) 825-3611

Closed Mondays • Tues, Wed, Fri, Sat 5 - 9 p.m.
 Thurs. Stag Only • Sunday Brunch 9 a.m. - 1 p.m.



1127 270th St • (515) 448-4166

www.ninedine.net

Monday ~ Closed
 Tuesday ~ 5 - 10 p.m.
 Wednesday ~ 5 - 10 p.m.
 Thursday ~ 5 - 10 p.m.
 Friday ~ 5 - 10 p.m.

Saturday ~ 5 - 10 p.m.
 Sunday ~ Closed



**Follow us on
Facebook**

MAKE AN IMPRESSION

Our Custom Printing Department has a wide array of products & services to grow your business or make your event unforgettable. Whether you are looking for unique business cards, promotional products or fundraising options, it's important to get the quality products you want.

Professional Branding



- Logo Design
- Business Cards
- Letterhead
- Envelopes
- Postcards
- Forms
- Notepads
- Post-It® Notes
- Folders

Promotional & Fundraising



- Signs
- Banners
- Raffle Tickets
- Calendars
- Saving Cards
- Magnets
- Window Clings
- Coupons
- Gift Certificates

Organizations & Businesses



- Event Tickets
- Flyers
- Posters
- Brochures
- Newsletters
- Rack Cards
- Postcard Mailers
- Stickers
- Menus

Contact us today for a FREE No-Obligation Quote!



Wright County Monitor
(515) 532-2871
 107 2nd Avenue NE
 Clarion, IA 50525

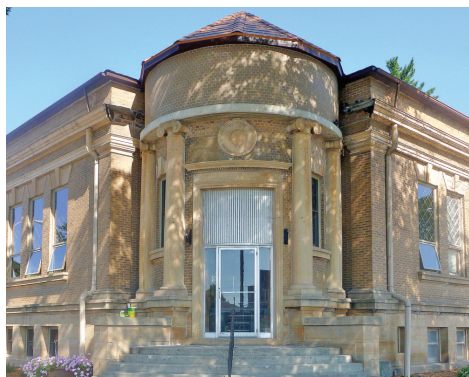
Eagle Grove Eagle
(515) 448-4745
 314 W. Broadway Street
 Eagle Grove, IA 50533

www.MidAmPublishing.com



Chamber: www.eaglegrove.com
 City: www.eaglegroveiowa.org

*Come have
 fun
 with us!*



Museum



Summerfest



Mud Volleyball



Chamber Lemonade Stand



Family Aquatic Center



Annual Craft Show



Summerfest Fun for Kids



Chamber Golf Outing



Chamber Golf Outing

Are your eggs in the best financial basket?



**Let us help...it's never too early to plan
for a secure financial future!**



Shallon Weis, AIF®, CFP®

Financial Advisor



James W. Tausz, CFP®, AIF®

President



Marty W. Schimp, CRPS®

Financial Advisor



Jarrod Raimann

Financial Advisor



Helping People Manage Money Since 1970

215 N Main St., Clarion, IA 50525

800-348-4419 • 515-532-6661 • FAX 515-532-6547

www.bradfordfinancialcenter.com • www.bradfordgroups.com

*Offering Securities through UNITED PLANNERS FINANCIAL SERVICES •
Member FINRA, SIPC • Investment Advisory Services offered through
Bradford Financial Center • United Planners is not affiliated with
Bradford Financial Center or Bradford Groups